

# THE CHINA TRAVEL COMPANY

*"We regard each and every trip we organise as a trip of a lifetime."*

**PG-11 | CHINA DISCOVERY**



 **ITINERARY PAGE 8**

 **PRICING & INCLUSIONS PAGE 25**



# CONTENTS & ABOUT THE CHINA TRAVEL COMPANY

## CONTENTS

- 3 ..... Trip Map
- 4 ..... Overview & Itinerary in Brief
- 7 ..... Health Protocols
- 8 ..... Day by Day Itinerary
- 25 ... Price Guide
- 26 ... Trip Inclusions & Exclusions
- 30 ... Recommended Reading
- 31 ... Essential Information

## ABOUT OUR COMPANY

Established as one of the UK's leading, independent and family owned China tour specialist our focus is on well thought through private and tailor made rail adventures. Our emphasis is very much on creating the right trip for you and we work closely with you in order to achieve this. We regard the China as a trip of a lifetime and use our experience and knowledge to make it that for you.

## ALL TOURS ARE FINANCIALLY PROTECTED

We are members of **ABTA** (Y1699) and our tours are **ATOL** protected (license 10287) giving you full peace of mind when booking with us both for monies paid to us as well as the code of conduct and high standards we are both delighted to and required to uphold.



# BEIJING • PINGYAO • XIAN • GUILIN • YANGSHUO • SHANGHAI



# PRIVATE GUIDED TOUR : PG-11 CHINA DISCOVERY

Dear Sir / Madam,

Please find full details of this itinerary in this dossier. If you have any questions at all please do not hesitate to contact me.

Best regards,  
The China Travel Company.

## THE CHINA TRAVEL COMPANY

- [www.thechinatravelcompany.co.uk](http://www.thechinatravelcompany.co.uk)
- [info@thechinatravelcompany.com](mailto:info@thechinatravelcompany.com)

☎ +44 (0)20 8816 8399

- ABTA member Y1699
- ATOL License 10287



## 11 NIGHT / 12 DAY PRIVATE TOUR VISITING :

### **BEIJING**

China's Capital - an eclectic mix of Imperial splendour & 21st Century Asia.

### **PINGYAO**

Well preserved Ming Dynasty walled city full of old world atmosphere.

### **XIAN**

China's Tang Dynasty Capital & home to the extraordinary Terra Cotta Army.

### **GUILIN & YANGSHUO**

Long popular home to some of China's most famous and iconic scenery.

### **SHANGHAI**

China bustling financial capital is full of energy and a glimpse into the future.



Vicky & Simon White

*"Thank you so much for what you did, not just booking the trip, but in your advice and guidance in the preparation phases. Everything we did and saw exceeded our expectations. It was without doubt the highlight of our 3 month 10 country tour. Not only would we recommend you, we will use you again."*

[CLICK HERE TO READ MORE VIEW MORE FEEDBACK ON OUR WEBSITE](#)



THECHINATRAVELCOMPANY.CO.UK | Email: [info@thechinatravelcompany.com](mailto:info@thechinatravelcompany.com)  
UK ☎: +44 (0) 20 8816 8399 | Part of HeadsEast Ltd - UK business registration: 6717612



## DAY

- 1** ● **BEIJING** Arrival in China's Capital of Beijing with a transfer to your hotel and time to relax.  
Kapok Hotel ★ ★ ★ ★ [Learn more...](#)
- 2** ● **BEIJING** Tour to the Great Wall at stunning Mutianyu & the Ming Tombs and Sacred Way.  
Kapok Hotel ★ ★ ★ ★ [Learn more...](#)
- 3** ● **BEIJING** Visit Tiananmen Square, the Forbidden City, Jingshan Park & explore the Hutongs by Rickshaw.  
Kapok Hotel ★ ★ ★ ★ [Learn more...](#)
- 4** ● **PINGYAO** Half day tour to the beautiful Temple of Heaven & Summer Palace before a Bullet Train to Pingyao.  
Hongshanyi Hotel ★ ★ ★ ★ [Learn more...](#)
- 5** ● **XIAN** The 100,000 Buddhist carvings at the Longmen Grottoes & bullet train on to Xian.  
Grand Noble Hotel ★ ★ ★ ★ ★ [Learn more...](#)
- 6** ● **XIAN** Visit the Terra Cotta Army, Big Wild Goose Pagoda, Xian's City Walls & vibrant Muslim Quarter.  
Grand Noble Hotel ★ ★ ★ ★ ★ [Learn more...](#)
- 7** ● **YANGSHUO** Flight on to Guilin & transfer direct to the picturesque town of Yangshuo on the Li River.  
Grand Noble Hotel ★ ★ ★ ★ ★ [Learn more...](#)



## DAY

- 8** • **YANGSHUO** Continue to explore the delights of this special part of China.  
Yangshuo Mountain Retreat ★ ★ ★ [Learn more...](#)
- 9** • **YANGSHUO** A final day to relax or further explore the scenery and villages of this area.  
Yangshuo Mountain Retreat ★ ★ ★ [Learn more...](#)
- 10** • **SHANGHAI** Visit the spectacular Reed Flute Cave before departing Guilin for the metropolis of Shanghai.  
SSAW Boutique Bund ★ ★ ★ ★ [Learn more...](#)
- 11** • **SHANGHAI** Yuyuan Gardens, Old Shanghai, Antique Market, the Bund, a Skyscraper visit & the Chinese Acrobats.  
SSAW Boutique Bund ★ ★ ★ ★ [Learn more...](#)
- 12** • **END** Take the ultra fast Maglev to the airport for your flight out of China.  
N/A



# YOUR DAY BY DAY ITINERARY

The following pages detail your itinerary day by day. All our trips are tried and tested and, between us, we have visited all destinations and accommodation and travelled on modes of transport. We like to offer our clients the greatest flexibility possible with their trip so if there is anything you would like to change please contact us.

## **JUST ASK US IF YOU WOULD LIKE TO MAKE ANY CHANGES**

---

*"We returned to the UK yesterday, completing our 3 weeks in China. Thanks very much for organising our itinerary. Everything went like a dream. Being met at each destination was a real boost and each of these guides were extremely helpful. Accommodation was all good and transport/ tickets all went smoothly. Would have been difficult to do this trip without your organisational help. Thank you!"*

Simon & Helen Randfield



# YOUR DETAILED DAY BY DAY ITINERARY

## DAY 1

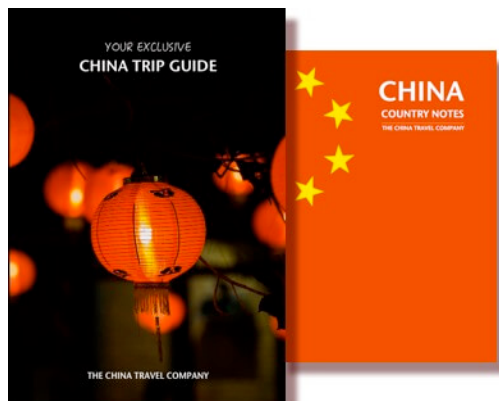
DATE TBC

## BEIJING

### ARRIVAL IN BEIJING WITH TIME TO RELAX AT THE HOTEL

Welcome to Beijing, China's cultural and political capital and a real highlight with its extraordinary blend of ancient and modern sights. Your guide will greet you at the airport with a transfer by private car to your hotel. The rest of the day is free to relax from the long flight or start to explore the city with the help of your personalised and exclusive Trip Guidebook we send you before the trip. The area around your centrally located hotel is perfect for an introductory walk.

 **Meals Included:** None Today.



### YOUR EXCLUSIVE TRIP GUIDEBOOK

Tap in to our knowledge of China with our exclusive guidebook personalised to your trip. These books are packed full of tips about the country, what to take, currency, destination guides and much more. The perfect way to prepare for and get the most out of your China experience with us!

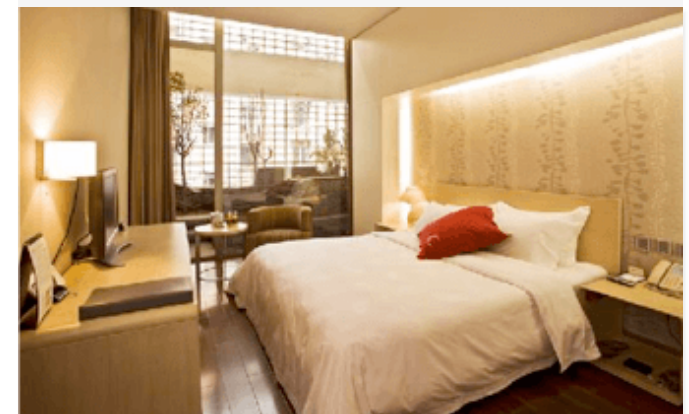
## OVERNIGHT

### KAPOK HOTEL



Stunningly designed boutique hotel located just to the east of the Forbidden City making for the perfect blend of design, comfort and location.

[CLICK HERE TO LEARN MORE](#)



Photos for guidance only & not necessarily the room booked



THECHINATRAVELCOMPANY.CO.UK | Email: [info@thechinatravelcompany.com](mailto:info@thechinatravelcompany.com)  
UK ☎: +44 (0) 20 8816 8399 | Part of HeadsEast Ltd - UK business registration: 6717612





# YOUR DETAILED DAY BY DAY ITINERARY

## DAY 2

DATE TBC

### BEIJING

#### THE GREAT WALL AT STUNNING MUTIANYU & THE MING TOMBS

Today we will be showing you one of China's most famous sights - the Great Wall. We visit the dramatic and less crowded Mutianyu section 70 km from Beijing set amongst spectacular mountain scenery. Dating back to the 6th Century and largely rebuilt in the 16th century during the Ming Dynasty, it is one of the best preserved sections of the wall largely due to the high standard of construction. Today's tour includes the cable car up and down from the Wall.

After, drive to the Ming Tombs, the burial place of 13 Ming Dynasty Emperors between 1368 to 1644AD some of whom oversaw the construction of the wall section you saw earlier. The tombs are approached along the sacred way guarded by giant marble figures and animals.

Return to your hotel with the rest of the evening free or just ask us for suggestions of shows or cultural activities.

**TOP TIP:** Bring decent shoes, sunglasses and hat for the trip to the Wall and remember that it is always a good 5 degrees centigrade cooler at the wall than in downtown Beijing.

 **Meals Included:** Hotel Breakfast & Restaurant Lunch.

## OVERNIGHT

### KAPOK HOTEL



Stunningly designed boutique hotel located just to the east of the Forbidden City making for the perfect blend of design, comfort and location.

[CLICK HERE TO LEARN MORE](#)



Photos for guidance only & not necessarily the room booked



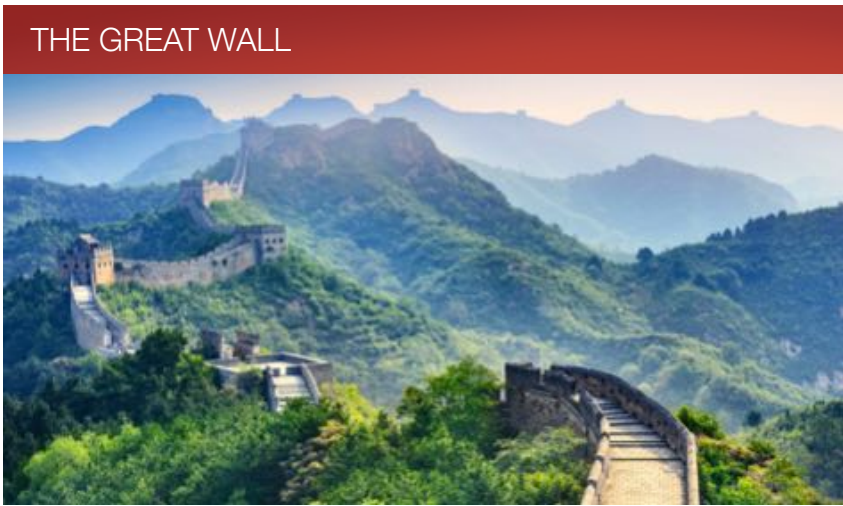
THECHINATRAVELCOMPANY.CO.UK | Email: [info@thechinatravelcompany.com](mailto:info@thechinatravelcompany.com)  
UK ☎: +44 (0) 20 8816 8399 | Part of HeadsEast Ltd - UK business registration: 6717612



"China's top destination  
blending ancient &  
modern culture."



Averages	J	F	M	A	M	J	J	A	S	O	N	D
Max temp °C	2	4	11	20	26	30	31	30	26	19	10	3
Min temp °C	-10	-7	-1	7	13	18	22	20	14	7	-1	-7
Rainfall mm	3	6	9	26	29	71	176	182	49	19	6	2



# YOUR DETAILED DAY BY DAY ITINERARY

## DAY 3

DATE TBC

### BEIJING

#### TIANANMEN SQUARE, FORBIDDEN CITY, JINGSHAN PARK & THE HUTONGS BY RICKSHAW

Start today with vast Tiananmen Square, the largest city square in the world and home to the Mao Mausoleum and Monument to the People's Heroes. To the north of the square is the equally huge palace complex of the Forbidden City. We will walk up the middle axis from south to north taking in the splendour of the most important central buildings before finishing in the ancient garden by the north gate. Directly north of the Forbidden city is Jingshan park where we climb beautifully landscaped "Coal Hill" for one of Beijing's best views.

In the afternoon step back in time with a trip by cycle rickshaw through the narrow lanes and alleys of Beijing's ancient residential Hutongs - the traditional Chinese city homes. There is also luxury in the Hutongs and we will visit Prince Gong's Mansion, an extravagant residential complex of gardens and pavilions built in 1777.

Return to your hotel with the rest of the evening free or just ask us for suggestions of shows or cultural activities.

 **Meals Included:** Hotel Breakfast & Restaurant Lunch.

## OVERNIGHT

### KAPOK HOTEL



Stunningly designed boutique hotel located just to the east of the Forbidden City making for the perfect blend of design, comfort and location.

[CLICK HERE TO LEARN MORE](#)



Photos for guidance only & not necessarily the room booked



THECHINATRAVELCOMPANY.CO.UK | Email: [info@thechinatravelcompany.com](mailto:info@thechinatravelcompany.com)  
UK ☎: +44 (0) 20 8816 8399 | Part of HeadsEast Ltd - UK business registration: 6717612



## DAY 4

DATE TBC

### PINGYAO

#### HALF DAY TOUR TO THE BEAUTIFUL TEMPLE OF HEAVEN & SUMMER PALACE BEFORE A BULLET TRAIN TO PINGYAO

Today's tour starts with the Temple of Heaven considered by many to be the most beautiful building in China. Perfectly symmetrical, its primary purpose was as a prayer hall the Emperors visited to ask the Gods for good harvests. Set inside a large park popular with Beijingers, you are likely to see cultural activities such as kite flying, Tai Chi classes, singing and ballroom dancing. Continue on to the tranquil Summer Palace west of Beijing built in 1750 by Emperor Qianlong. Dominated by Kunming lake, dotted with peaceful pavilions and gardens, it is as popular an escape from the city for today's residents as it was for the Imperial court.

After the tour a transfer to the station to catch a bullet train. Reaching speeds of over 300 km/hour the overall trip is on a par with flying with the added bonuses of views from the window and being able to stretch your legs.

Late afternoon arrival in Pingyao, an intact Ming Dynasty city and once a centre of banking in China with the only complete city wall of that era left in China. Transfer to your hotel with free time for the rest of the day.

 **Meals Included:** Hotel Breakfast.

## OVERNIGHT

### HONGSHANYI HOTEL



Ming Dynasty style hotel within the walls of the old city offering a traditional Chinese experience which is what Pingyao is all about.

[CLICK HERE TO LEARN MORE](#)



Photos for guidance only & not necessarily the room booked



"Must see Ming Dynasty walled city full of character and history."



Averages	J	F	M	A	M	J	J	A	S	O	N	D
Max temp °C	2	5	11	20	25	29	29	28	24	18	10	3
Min temp °C	-12	-8	-2	5	11	15	18	17	11	4	-3	-9
Rainfall mm	8	12	20	44	79	107	225	201	119	35	16	5



# YOUR DETAILED DAY BY DAY ITINERARY

**DAY 5**

**DATE TBC**

 **XIAN**

## WALKING TOUR OF THE OLD CITY INCLUDING MERCHANTS HOUSES & THE CITY WALLS - BULLET TRAIN TO XIAN

Today you have a private walking tour of Pingyao's old city within the walls. Visit a selection of the merchant and banking houses which have been converted into museums. You also have the opportunity to see the Confucius Temple and spend time walking up on the city's most impressive structure, the Ming Dynasty Walls which completely enclose the old city.

After the tour a transfer to the station for a bullet train to Xian. Evening arrival in Xian, China's Tang Dynasty Capital and terminus of the Silk Road with a transfer to your hotel to overnight.

**SUGGESTION (note not included yet):** This evening a trip to the lavish Tang Dynasty show performed in a beautiful theatre. The show itself highlights Chinese culture from this Dynasty, considered a golden age in China's long history. Music, singing and dance with a traditional orchestra and colourful costumes makes this a visual feast for all ages - just ask us for more details!

 **Meals Included:** Hotel Breakfast.

**OVERNIGHT**

## GRAND NOBLE HOTEL



Well appointed hotel located close to the city walls of Xian with large comfortable rooms, good bathrooms and a great buffet breakfast.

[CLICK HERE TO LEARN MORE](#)



Photos for guidance only & not necessarily the room booked



THECHINATRAVELCOMPANY.CO.UK | Email: [info@thechinatravelcompany.com](mailto:info@thechinatravelcompany.com)  
UK ☎: +44 (0) 20 8816 8399 | Part of HeadsEast Ltd - UK business registration: 6717612



# YOUR DETAILED DAY BY DAY ITINERARY

**DAY 6**

**DATE TBC**

 **XIAN**

## TERRA COTTA ARMY, BIG WILD GOOSE PAGODA, CITY WALLS & MUSLIM QUARTER

Today visit one of China's most extraordinary sights, the Terra Cotta Army built by China's first Emperor Qin Shi Huang in 246 BC. Several thousand of the life-sized soldiers are on display and, with no two soldiers looking alike, make for a truly impressive spectacle.

We also visit a relic of the Tang Dynasty, the Big Wild Goose Pagoda, home to some of the most famous Buddhist scriptures in China. It is possible to climb the pagoda - you will need to buy a ticket locally if you wish to do this - for views over Xian. Continue to the 14 km Ming Dynasty City Walls which are up to 18 meters thick at the base and 12 meters in height. It is possible to hire bicycles and ride some sections of the wall - local rental payment required.

Finish the day with a wander through Xian's vibrant Muslim quarter, including a visit to the Great Mosque, unusually built entirely in the Chinese architectural style. This area is an excellent place to souvenir shop.

 **Meals Included:** Hotel Breakfast & Restaurant Lunch.

**OVERNIGHT**

## GRAND NOBLE HOTEL



Well appointed hotel located close to the city walls of Xian with large comfortable rooms, good bathrooms and a great buffet breakfast.

[CLICK HERE TO LEARN MORE](#)



Photos for guidance only & not necessarily the room booked



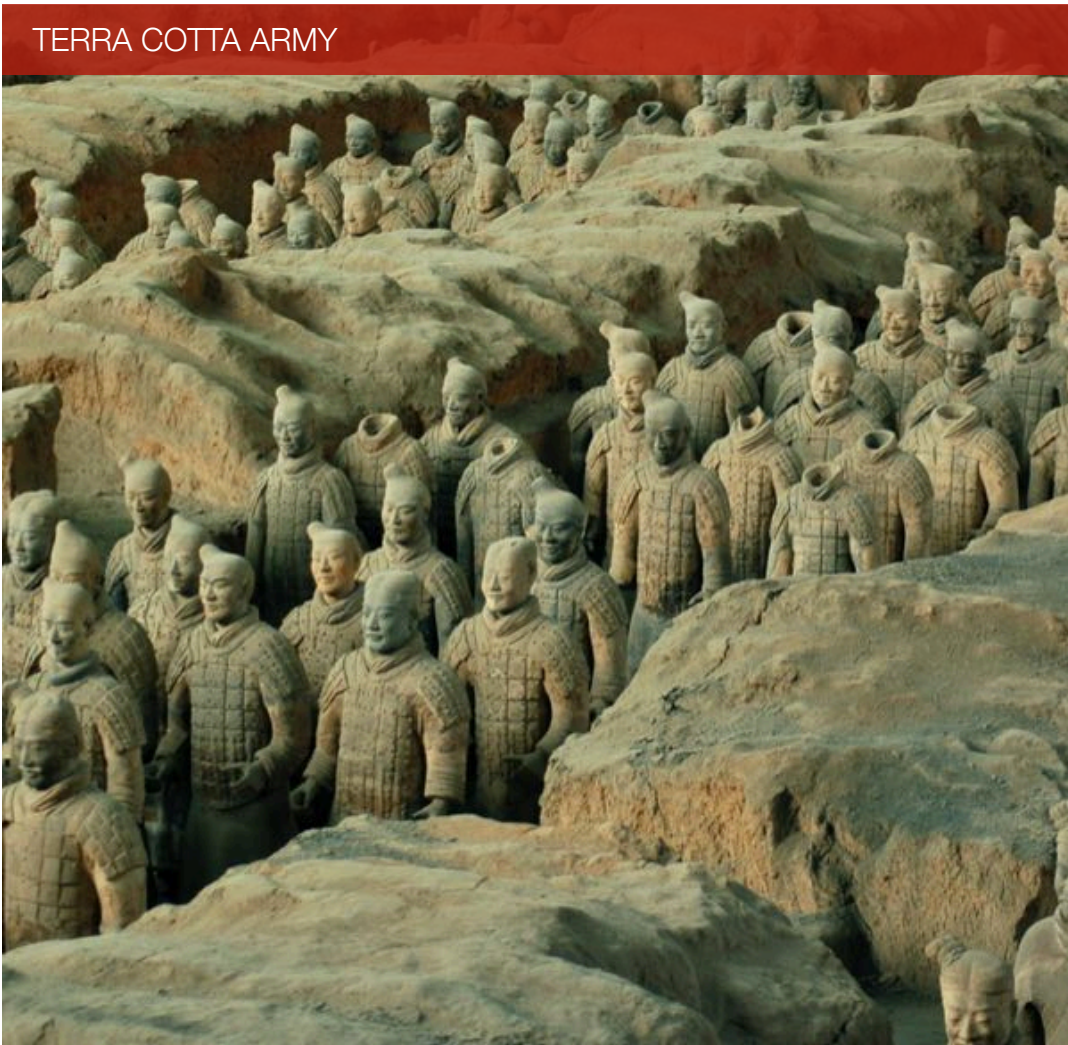
THECHINATRAVELCOMPANY.CO.UK | Email: [info@thechinatravelcompany.com](mailto:info@thechinatravelcompany.com)  
UK ☎: +44 (0) 20 8816 8399 | Part of HeadsEast Ltd - UK business registration: 6717612



*"Offers much more than just the Terra Cotta warriors."*



Averages	J	F	M	A	M	J	J	A	S	O	N	D
Max temp °C	5	8	14	21	26	31	32	31	25	20	12	6
Min temp °C	-4	-1	4	10	14	19	22	21	16	10	3	-3
Rainfall mm	7	10	29	43	60	54	99	71	92	60	24	6





## DAY 7

DATE TBC

### YANGSHUO

#### THE UNDERGROUND HANYANGLING MAUSOLEUM & ONWARD FLIGHT TO GUILIN & YANGSHUO

On the way to the airport we visit the unique Hanyangling Mausoleum, the burial place of the Emperor Jing of Han who ruled from 188 BC to 141 BC. The Mausoleum is China's first underground museum where you can actually walk over the burial pits along glass paths. Much less crowded and more intimate than the Terra Cotta Army, the experience allows you to get up closer to the ancient artefacts which are well presented.

Fly on to Guilin in Southern China's Guangxi province. Arrival in Guilin with a transfer direct to your hotel in Yangshuo, a relaxed town about 1 hour from Guilin and surrounded by some of China's best scenery.

Free time to start exploring the area, a firm favourite of many for its blend of stunning countryside, relaxed atmosphere and plenty of superb activities to do all of which are easy to arrange locally through your hotel as the whim takes you.

**NOTE:** Why no Li River Cruise to get to Yangshuo? We feel the Li River Cruise has become over touristed and only recommended if you are not overnighing in Yangshuo itself. The hotel we use in Yangshuo is surrounded by the same beautiful scenery as you see on the Li River and makes for a superb base from which to explore the area. In addition, the Li River Cruise requires a night be spent in Guilin city.

 **Meals Included:** Hotel Breakfast.

## OVERNIGHT

### YANGSHUO MOUNTAIN RETREAT



Perfect option for those wanting a quiet, relaxing stay to appreciate the rural beauty of this part of China. A little way from town but that is the point!

[CLICK HERE TO LEARN MORE](#)



Photos for guidance only & not necessarily the room booked



# YOUR DETAILED DAY BY DAY ITINERARY

**DAY 8**

**DATE TBC**

## YANGSHUO

### FREE DAY TO EXPLORE THE TOWN & BEAUTIFUL SURROUNDING COUNTRYSIDE

A free day in Yangshuo to continue to explore the town and its beautiful surrounding countryside. A wide range of local tours and activities can easily be booked locally through the hotel. Such activities include cycle tours, rafting trips, cookery, Tai Chi or calligraphy classes or you can do as so many do here - just relax and take in all the scenery from the terrace of your hotel or the many cafes and restaurants in the town itself.

**SUGGESTION (note not included yet):** Yangshuo offers the spectacular Liu Sanjie Impression Light Show - a real highlight of any trip to this, or indeed any, part of China. Put together by the same team who organised the 2008 Beijing Olympic opening ceremony, over 600 performers and superb lighting make this outdoor show an unforgettable experience - just ask us for more details!

 **Meals Included:** Hotel Breakfast.

**OVERNIGHT**

### YANGSHUO MOUNTAIN RETREAT



Perfect option for those wanting a quiet, relaxing stay to appreciate the rural beauty of this part of China. A little way from town but that is the point!

[CLICK HERE TO LEARN MORE](#)



Photos for guidance only & not necessarily the room booked



THECHINATRAVELCOMPANY.CO.UK | Email: [info@thechinatravelcompany.com](mailto:info@thechinatravelcompany.com)  
UK ☎: +44 (0) 20 8816 8399 | Part of HeadsEast Ltd - UK business registration: 6717612



"Deservedly popular and home to some of China's most iconic scenery."



**Averages**

Max temp °C

Min temp °C

Rainfall mm

	J	F	M	A	M	J	J	A	S	O	N	D
Max temp °C	12	13	16	23	27	30	33	33	30	27	20	15
Min temp °C	5	7	10	16	20	23	25	25	22	17	12	7
Rainfall mm	63	97	137	247	352	347	231	173	82	86	64	43

LIMESTONE KARST SCENERY



IMPRESSION LIGHT SHOW



LI RIVER



## DAY 9

DATE TBC

### YANGSHUO

#### CONTINUE TO EXPLORE THE DELIGHTS OF THIS SPECIAL PART OF CHINA

Today is free to discover more of Yangshuo and enjoy this very special part of China or just relax and recharge the your battery before your continuing on your China travels.

 **Meals Included:** Hotel Breakfast.

## OVERNIGHT

### YANGSHUO MOUNTAIN RETREAT



Perfect option for those wanting a quiet, relaxing stay to appreciate the rural beauty of this part of China. A little way from town but that is the point!

[CLICK HERE TO LEARN MORE](#)



Photos for guidance only & not necessarily the room booked



# YOUR DETAILED DAY BY DAY ITINERARY

**DAY 10**

**DATE TBC**

## SHANGHAI

### VISIT THE SPECTACULAR REED FLUTE CAVE BEFORE DEPARTING GUILIN FOR SHANGHAI

Free time today before a transfer back to Guilin for your onward transport. On the way we stop at Guilin's beautiful Reed Flute Cave, an extensive and colourful subterranean experience over 180 million years old and full of stalactites, stalagmites and 70 inscriptions which can be dated back as far as 792 AD in the Tang Dynasty and has been a tourist attraction for nearly 1,200 years!

Continue to the airport for your flight on to Shanghai. Arrival in Shanghai, China's exciting and futuristic financial capital and living testament to China's phenomenal growth. Your guide and driver will meet and transfer you to your hotel.

 **Meals Included:** Hotel Breakfast.

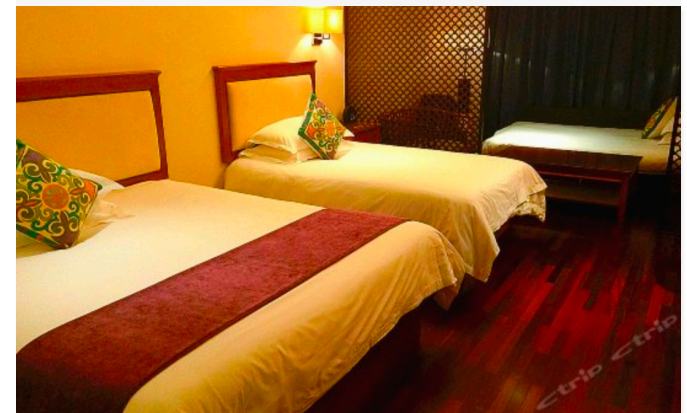
**OVERNIGHT**

### **SSAW BOUTIQUE BUND**



Located on Renmin Road near enough to all of Shanghai's main attractions. A welcome newer addition to the boutiques of Shanghai.

[CLICK HERE TO LEARN MORE](#)



Photos for guidance only & not necessarily the room booked



THECHINATRAVELCOMPANY.CO.UK | Email: [info@thechinatravelcompany.com](mailto:info@thechinatravelcompany.com)  
UK ☎: +44 (0) 20 8816 8399 | Part of HeadsEast Ltd - UK business registration: 6717612



# 上海 SHANGHAI HIGHLIGHTS

"Dynamic and modern city and key to the future of China."



Averages	J	F	M	A	M	J	J	A	S	O	N	D
Max temp °C	8	8	13	19	24	27	32	32	27	22	17	11
Min temp °C	1	2	5	11	16	20	25	25	21	15	9	2
Rainfall mm	7	9	11	13	15	15	18	16	16	13	8	34

PUDONG SKYLINE



YU GARDENS



TRENDY BACKSTREETS



**DAY 11**

**DATE TBC**

## SHANGHAI

### YUYUAN GARDENS, OLD SHANGHAI, ANTIQUE MARKET, THE BUND, SKYSCRAPER & ACROBATS

Today you will have a full day private tour of some of Shanghai's highlights starting with the classical Yuyuan Garden that dates back to 1577. Surrounding the garden is Old Shanghai, an area that has been a vibrant commercial centre for over a century. Here we visit Fuyou Road antique market, one of the best places for souvenir hunting and a fascinating experience even if not shopping. The tour continues with a walk down the Bund along which the Huangpu River runs and where some of Asia's finest colonial architecture is located. From here we cross the River by ferry to Shanghai's ultra modern Pudong Financial district for a bird's eye view of the city from the top of one of the stunning skyscrapers.

There is no better way to round off this Shanghai experience than with a visit to the world famous Chinese Acrobats for a show filled with colour and excitement.

Return to your hotel or head out to sample Shanghai's vibrant nightlife.

 **Meals Included:** Hotel Breakfast.

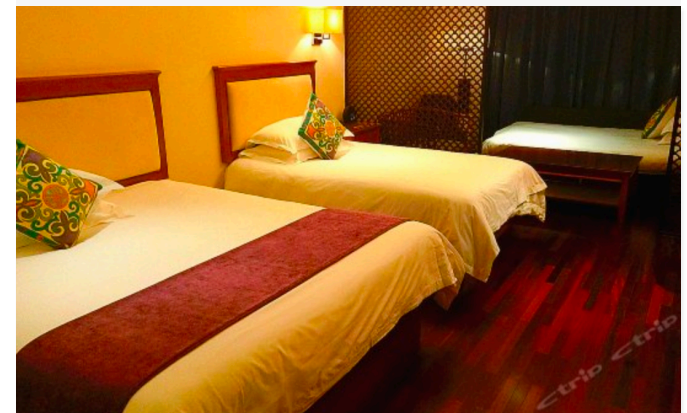
**OVERNIGHT**

### SSAW BOUTIQUE BUND



Located on Renmin Road near enough to all of Shanghai's main attractions. A welcome newer addition to the boutiques of Shanghai.

[CLICK HERE TO LEARN MORE](#)



Photos for guidance only & not necessarily the room booked



**DAY 12**

**DATE TBC**

 **END**

## TAKE THE ULTRA FAST MAGLEV TO THE AIRPORT FOR YOUR FLIGHT OUT OF CHINA

Free time until a transfer to the Maglev station for the world's fastest train to Pudong Airport to catch your flight out of China. Your transfer guide will buy a standard class Maglev ticket for you and make sure you get on the train which takes just 8 minutes to cover the 30km to the airport reaching a top speed of 430 km / hour (300 km / hour before 9am).

We sincerely hope that you have had a fantastic China experience with us full of all the memories which make this country such a fascinating destination that continues to inspire us!

---

 **Meals Included:** Hotel Breakfast.



**Dawn Collins & Family**

*"I cannot praise the company and the team enough for the help we got planning this trip - right down to the finer details.*

*I have never received the customer service of this level from another tour operator, and would have no reservations about recommending your company."*

[VIEW MORE FEEDBACK](#)





- **Price guide\* per person based on 2 people travelling: UK £ 3,105 / US\$ 3,880**

*\* Prices vary by date, availability and the number of people in your party. Please contact us for a firm quote.*

A full list of what is included in this price can be seen on the following pages. Note that this does not include any international flights or visas.

---

- **Booking and payment terms:**

Once we receive completed booking forms we will book and confirm services for you and send an invoice for the deposit payment of 20% per person (plus any international flights we are booking) with full payment due 60 days before departure. All payments to us are protected under our ATOL or ABTA licenses and we accept payment by Credit Card, Debit Card (no fee) or bank transfer. [Click here to read our Booking Terms & Conditions.](#)

---

- **Our pricing policy:**

We believe that the the pricing for this tour offers excellent value for the services and standards we operate and we frequently check our pricing against that of other operators. If you feel you have a similar quote that is of a lower price we are happy to reconsider our pricing for you if you can forward the other quote so we can fairly compare. We would add that in our experience we usually find some differences that, although they may appear subtle, make both a significant difference to the price and, more importantly, the quality of the trip experience.



## INCLUSIONS & EXCLUSIONS FOR THIS ITINERARY

Here you will find the inclusions and exclusions for this itinerary. We guarantee you will receive the services below although on very rare occasions one service may need to be replaced with another similar one as there are a lot of complex logistical elements to a trip like this.

### INTERNATIONAL PLANE TICKETS: Tickets for flights the start and finish of the above trip

✈ International flight tickets are NOT included in this itinerary. We CAN arrange these for you.

### INTERNAL PLANE TICKETS: Tickets for flights within China

- ✈ Xian to Guilin economy class
- ✈ Guilin to Shanghai economy class

#### Domestic Luggage Policy:

- **Some flights do not allow baggage to be included in the cost of the ticket and must be paid for locally.**

- Passengers are permitted one check-in hold piece with maximum weight of 99 lb / 45 kg and up to 100 cm (39") in length, 60 cm (24") in width and 40 cm (16") in height.
- Passengers are permitted one carry-on piece with a maximum weight of 11 lb / 5 Kg. Each carry-on must not be more than 55 cm (22") in length, 40 cm (16") in width and 20 cm (8") in height

### TRAIN TICKETS: Click here to learn more about the trains - ask us about possible upgrades

- ✓ Beijing to Pingyao first class (4 hour bullet train trip)
- ✓ Pingyao to Xian second class (3 hour bullet train trip)
- ✓ Maglev ticket to Pudong airport standard class (8 minutes reaching 430km/hour)

### ACCOMMODATION: Let us know if you have your own hotel preferences or wish to upgrade

- ✓ 3 nights Beijing - Kapok Hotel 4\* (courtyard room with breakfast)



## INCLUSIONS & EXCLUSIONS FOR THIS ITINERARY

- ✓ 1 night Pingyao - Hongshanyi Hotel 4\* (standard room with breakfast)
- ✓ 2 nights Xian - Grand Noble Hotel 5\* (standard room with breakfast)
- ✓ 3 nights Yangshuo - Yangshuo Mountain Retreat 3\* (deluxe room with breakfast)
- ✓ 2 nights Shanghai - SSAW Boutique Hotel Bund 4\* (deluxe room with breakfast)

### ■ TRANSFERS: Private with driver and an English speaking guide (except where stated)

- ✓ Beijing - Airport to Hotel
- ✓ Beijing - Hotel to Bullet Train Station
- ✓ Pingyao - Bullet Train Station to Hotel
- ✓ Pingyao - Hotel to Bullet Train Station
- ✓ Xian - Bullet Train Station to Hotel
- ✓ Xian - Hotel to Airport
- ✓ Guilin - Airport to Hotel in Yangshuo
- ✓ Yangshuo - Hotel to Guilin Airport
- ✓ Shanghai - Airport to Hotel
- ✓ Shanghai - Hotel to Train Station for the Maglev train to Pudong Airport

### ■ TOURS: All our tours include entrance fees and use professional, licensed guides

- ✓ Beijing - Full day private tour to the Great Wall at Mutianyu including cable car up and down and the Ming Tombs.
- ✓ Beijing - Full day private tour to Tiananmen Square, The Forbidden City, Jingshan park and the ancient Hutongs by cycle rickshaw including Prince Gong's Mansion.
- ✓ Beijing - Half day private tour to the Temple of Heaven & Summer Palace.
- ✓ Pingyao - Full day private tour of Pingyao Old City.
- ✓ Xian - Full day private tour to the Terra cotta Warriors, Wild Goose Pagoda, City Walls, Muslim Quarter.
- ✓ Xian - Half day private tour to the Hanyangling Mausoleum.
- ✓ Guilin - Visit to the Reed Flute Cave on the way back from Yangshuo to Guilin.
- ✓ Shanghai - Full day private tour to the Yuyuan gardens, Old City, Fuyou Road Antique Market, The Bund, Huangpu River and Skyscraper.
- ✓ Shanghai - Evening trip to the Chinese Acrobats including transfers.



# INCLUSIONS & EXCLUSIONS FOR THIS ITINERARY

## OTHER INCLUSIONS: Also included in this trip

- ✓ Meals - As indicated in the itinerary.
- ✓ Visa Paperwork - Confirmation documentation you need in order to get the visas.
- ✓ Support - Emergency numbers and contacts for each destination.
- ✓ Guidebook - Our exclusive Trip Guidebook personalised to your trip.
- ✓ Financial Peace of Mind - All monies paid to us are legally protected under UK law.

## NOT INCLUDED IN THIS TOUR

- ✗ International Airfare to / from the start / finish of your trip - we can book these flights on request.
- ✗ The Chinese visa - we can advise and partner with [VisaCentral](#).
- ✗ Travel insurance to cover any medical treatment - we recommend [Citybond Suretravel](#) (UK residents only).
- ✗ Discretionary gratuities to drivers and guides.

## END





"A fantastic, once in a lifetime trip, arranged by real experts – thank you. We saw and experienced so much in the space of a few weeks and have so many memories to look back on."

**Jill Morris**



"This holiday was one of the best we have had, thanks to everyone who made it possible. I've done the google review, it's important that people can see how good you are. Many Thanks for your help."

**Tim Ellis**



"Absolutely awesome time! I think we have seen as many of the iconic sights of China that you could possibly fit into 2 weeks and all done in comfort and style. Thank you so much."

**Susan Rutherford**



"I cannot praise the company and the team enough for the help we got planning this trip. I have never received the customer service of this level and would have no reservations about recommending your company."

**Dawn Collins**



"The trip exceeded my expectations. It was well organised, we felt really well supported, the guides made us feel very welcome and well looked after and we were very pleased with the hotels."

**Fiona Nicolle & Family**

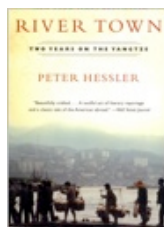


"It was an excellent, well organised trip to many areas of China which we wouldn't have been able to do without your expertise. Thank you for a trip of a lifetime from myself and my family."

**Lily O'Hara & Family**

[CLICK HERE TO VIEW MORE FEEDBACK ON OUR WEBSITE](#)





## RIVER TOWN

PETER HESSLER

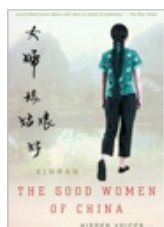
Set in the remote town of Fuling in the Yangtze River Valley this best selling book charts the experiences of the author as a Peace Corps volunteer at a time when China was embarking on the immense changes of reform and opening up.



## MAO: THE UNKNOWN STORY

JUNG CHANG

Well researched and based on interviews with those who knew and dealt with him. The book doesn't flinch from exposing the brutality of Mao but is also charts his rise to power and the methods he employed to maintain.



## GOOD WOMEN OF CHINA

XINRAN

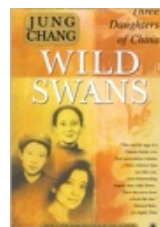
This unforgettable book is the story of how Xinran negotiated the minefield of restrictions imposed on Chinese journalists to reach out to women across the country.



## RED CHINA BLUES

JAN WONG

An excellent book that covers the authors experiences in China in the 1970s when she moved there from Canada as a supporter of Mao's Cultural Revolution. The book charts her initial enthusiasm for Mao until her eventual disillusionment.



## WILD SWANS

JUNG CHANG

20th Century history told through the the story of three generations of the same family. There are few books on China which bring the history to life and feel so personal with such ease and readability.



## CHINA ROAD

ROB GIFFORD

Running 3,000 miles from Shanghai to the border of Kazakhstan in the north-west, Route 312 - China's 'Route 66' - is a road that Rob Gifford has always wanted to travel. Part pilgrimage, part reportage - this book illuminates a country on the move.



## RED DUST

MA JIAN

A travel book set over the authors three years of journeying through remote parts of China in the 1980s which was partly an escape from the surveillance and disapproval of his life by the authorities in Beijing.



## WOLF TOTEM

JIANG RONG

This is a compelling story set during the cultural revolution about a Beijing intellectual who volunteers to live in a remote and idyllic area of Inner Mongolia. His simple life here is shattered as people swarm into the region upsetting the environment.



# ESSENTIAL CHINA INFORMATION, TIPS & FREQUENTLY ASKED QUESTIONS

## HOW FAR IN ADVANCE DO I NEED TO BOOK?

We suggest a minimum of 3 months but most people book further ahead than that to take advantage of competitive international flight pricing which tends to be cheaper the further in advance you book. For some of the smaller and popular boutique style hotels in China you will often need to book at least 6 months in advance to ensure availability.

## WHAT HAPPENS ONCE I BOOK?

On completing our booking forms we will make all the necessary reservations and confirm availability with you and issue an invoice for the deposit payment (or full payment if it is less than 60 days before your trip start date). About 1 month before your trip starts we send you our Trip Guidebook which covers all the information you need to know about your trip including emergency contact numbers and hotel details.

## WHAT ARE YOUR PAYMENT TERMS & CONDITIONS?

On receipt of a booking confirmation from us we require a deposit payment of 20% per person plus any international airfares. 60 days before departure we require the balance to be settled. You can read our full booking terms and conditions by [clicking here](#). We accept credit card payment and debit card as well as bank transfers.

## WHAT CLOTHES SHOULD I BRING?

This is dependent on the time of year. In the summer it is hot almost everywhere so light and well ventilated summer clothing is essential as well as protection from the sun - sunglasses and a hat. Autumn and spring can be a bit unpredictable but if the weather is good it will be the same as you would wear on a good summers day in the UK. Winters are cold and layers of warm clothing are the way to go. China is not so formal for dress although respect should be shown in temples.

## WHEN IS THE BEST TIME TO VISIT CHINA?

It is generally considered that the April May and September October periods off the best weather and best chance of clear skies. This doesn't stop many people visiting in the summer months or winter though. China is so big that it has something for any time of the year.

## DO YOU OFFER GROUP TOURS IN CHINA?

Very rarely will we offer group tours (the exception are the Li River and Yangtze Cruises as these are by their very nature group trips). Group tours (even small group tours) have quite a bad reputation in China for wasting your precious time on what we call "shoppportunities" (unwanted shopping stops) making private tours a far better option.

## DO I NEED A VISA?

Almost all nationalities including US, UK, Australian, Canadian and European citizens. [Click here](#) to see more information on the visas.

## IS MY MONEY PROTECTED IF I BOOK WITH YOU?

Yes, all trips booked with us have financial protection through our ATOL license (10287) or insurance we have to cover non-flight bookings. We are also members of ABTA (Y1699) and abide by their code of conduct.

## HOW MUCH SPENDING MONEY DO I NEED?

With a full touring program, hotels, transport and transfers booked through us you won't need that much spending money. We generally advise a minimum of £20 a day per person to cover drinks, and an evening meal if that isn't included. You can, of course, spend much more with top restaurants having close to international pricing. Then there are souvenirs and shopping to consider!



# ESSENTIAL CHINA INFORMATION, TIPS & FREQUENTLY ASKED QUESTIONS

## IS CHINA SAFE?

China is one of the safest countries to visit and in many respects safer for tourists than Western European or North American destinations. Crime against foreigners is very rare and providing common sense is used you should not have any problems. Of course, keep an eye on your pockets and bags in crowds.

## WHAT CURRENCY SHOULD I BRING?

Euros, US Dollars and UK Pounds are all accepted for exchange in China although avoid Travellers Cheques as these are hard to exchange. Most people will make use of ATMs which are easy to find and increasingly, you can obtain Chinese yuan before your trip in airports or Post Offices and currency exchange booths. More details on Chinese money and costs can be found by clicking [here](#).

## CAN YOU BOOK INTERNATIONAL FLIGHTS ?

Yes, as we hold an ATOL license (number 10287) we are permitted by the Civil Aviation Authority in the UK to book flights on behalf of our clients. We are a British Airways preferred operator but also book with other airlines to get the best deals and routes for our clients.

## ARE YOUR TRIPS SUITABLE FOR CHILDREN

China can be a rewarding experience for children. We can advise in more detail what we feel would be the most suitable options depending on the ages of your children and your particular circumstances. We also offer family specific trips you can [view here](#). For pricing purposes anyone 12 years and over at the time of the end of their trips with us is considered an adult.

## MEDICAL ADVICE & VACCINATIONS

Our trips are designed for anybody with a reasonable standard of fitness. Where we believe there are special requirements this is mentioned in the trip information. We can cater for clients with disabilities and adapt trips accordingly and we can also cater for different dietary requirements if informed at the time of booking. There are no specific vaccinations required to enter China but you are advised to contact your local travel clinic or doctor as there may be requirements in certain cases that are dependent on your own medical history. A good resource to check requirements is [NHS Fit For Travel](#).

## DO YOU SELL TRAVEL INSURANCE?

As a booking condition we require all clients taking our trips to have their own insurance against all possible medical costs whilst abroad. We recommend Citybond Suretravel travel insurance which you can get a quote for by [clicking here](#). Note that we get a small commission on each policy taken out.

## PLUGS, ELECTRICITY, INTERNET & WIFI

Voltage in Mainland China is 220V, 50 Hz. A variety of electrical outlets can be found in China and can accept the standard Type A and common Type I plugs as well as Type C plugs. Most hotels will have WiFi in public areas and paid internet in rooms.

## IS THERE ANYTHING ELSE I SHOULD BE ASKING?

Almost certainly! We fully expect you will have many more questions and we are here to answer them so please do not hesitate to [contact us](#) as, after all, that is what we are here for!

