

THE CHINA TRAVEL COMPANY

"We regard each and every trip we organise as a trip of a lifetime."

PG-12 | CHINA TOP TEN



 **ITINERARY PAGE 10**

 **PRICING & INCLUSIONS PAGE 44**



CONTENTS

- 3 Trip Map
- 4 Overview & Itinerary in Brief
- 9 Health Protocols
- 10 ... Day by Day Itinerary
- 44 ... Price Guide
- 45 ... Trip Inclusions & Exclusions
- 50 ... Recommended Reading
- 51 ... Essential Information

ABOUT OUR COMPANY

Established as one of the UK's leading, independent and family owned China tour specialist our focus is on well thought through private and tailor made rail adventures. Our emphasis is very much on creating the right trip for you and we work closely with you in order to achieve this. We regard the China as a trip of a lifetime and use our experience and knowledge to make it that for you.

ALL TOURS ARE FINANCIALLY PROTECTED

We are members of **ABTA** (Y1699) and our tours are **ATOL** protected (license 10287) giving you full peace of mind when booking with us both for monies paid to us as well as the code of conduct and high standards we are both delighted to and required to uphold.



BEIJING • XIAN • LHASA • CHENGDU • YANGTZE • SHANGHAI • HUANGSHAN • HANGZHOU • Guilin • YANGSHUO • HONG KONG



THECHINATRAVELCOMPANY.CO.UK | Email: info@thechinatravelcompany.com
UK ☎: +44 (0) 20 8816 8399 | Part of HeadsEast Ltd - UK business registration: 6717612



PRIVATE GUIDED TOUR : PG-12 CHINA TOP TEN

Dear Sir / Madam,

Please find full details of this itinerary in this dossier. If you have any questions at all please do not hesitate to contact me.

Best regards,
The China Travel Company.

THE CHINA TRAVEL COMPANY

- www.thechinatravelcompany.co.uk
- info@thechinatravelcompany.com

☎ +44 (0)20 8816 8399

- ABTA member Y1699
- ATOL License 10287



23 NIGHT / 24 DAY PRIVATE TOUR VISITING :



BEIJING

China's Capital - an eclectic mix of Imperial splendour & 21st Century Asia.



XIAN

China's Tang Dynasty Capital & home to the extraordinary Terra Cotta Army.



LHASA

Tibet's otherworldly capital with stunning architecture and setting.



CHENGDU

Famous as the place to see Giant Pandas but offers much more besides.



YANGTZE

Cruise the mighty Three Gorges of China's biggest river in comfort.



SHANGHAI

China bustling financial capital is full of energy & a glimpse into the future.



HUANGSHAN

The most dramatic of China's sacred mountains offering superb walks.



HANGZHOU

Chinese cultural centre set around the temples and gardens of West Lake.



GUILIN & YANGSHUO

Long popular home to some of China's most famous and iconic scenery.



HONG KONG

Fantastically located and cosmopolitan city distinct from the rest of China.



THECHINATRAVELCOMPANY.CO.UK | Email: info@thechinatravelcompany.com
UK ☎: +44 (0) 20 8816 8399 | Part of HeadsEast Ltd - UK business registration: 6717612



DAY

- 1 • BEIJING**

Arrival in China's Capital of Beijing with a transfer to your hotel and time to relax.

Double Happiness Courtyard ★ ★ ★ [Learn more...](#)
- 2 • BEIJING**

Trek along the wild & spectacular Jingshanling section of the Great Wall.

Double Happiness Courtyard ★ ★ ★ [Learn more...](#)
- 3 • BEIJING**

Visit the Temple of Heaven, Tiananmen Square, the Forbidden City & Summer Palace.

Double Happiness Courtyard ★ ★ ★ [Learn more...](#)
- 4 • XIAN**

Explore Old Beijing by Rickshaw stopping at Prince Gong's Mansion before a Bullet Train on to Xian.

Atour Nanmen Xian ★ ★ ★ ★ [Learn more...](#)
- 5 • XIAN**

Visit the Terra Cotta Army, Big Wild Goose Pagoda, Xian's City Walls & vibrant Muslim Quarter.

Atour Nanmen Xian ★ ★ ★ ★ [Learn more...](#)
- 6 • LHASA**

Flight on to Tibet's Capital of Lhasa with a transfer to your hotel & free time.

Kyichu Hotel ★ ★ ★ [Learn more...](#)
- 7 • LHASA**

Drepung Monastery, Nechung Residence, Sacred Jokhang Temple & surrounding Kora.

Kyichu Hotel ★ ★ ★ [Learn more...](#)



DAY

8	● LHASA	The truly spectacular Potala Palace & Ancient Sera Monastery. Kyichu Hotel ★ ★ ★ Learn more...
9	● LHASA	Day trip out of the city to Ganden Monastery with time to walk in the surrounding hills. Kyichu Hotel ★ ★ ★ Learn more...
10	● CHENGDU	Fly from Lhasa to Chengdu, the capital of Sichuan province. Buddhazen Hotel ★ ★ ★ Learn more...
11	● YANGTZE	The Research Base for Giant Panda Breeding & Bullet Train to Chongqing to join your Yangtze Cruise. Yangtze River Cruise Ship ★ ★ ★ ★ ★
12	● YANGTZE	Cruise through Qutang Gorge & take a side trip to Shibaozhai temple complex. Yangtze River Cruise Ship ★ ★ ★ ★ ★
13	● YANGTZE	Tributary side trip by small boat & cruise the Wu & Xiling Gorges to the Three Gorges Dam. Yangtze River Cruise Ship ★ ★ ★ ★ ★
14	● SHANGHAI	Tour to the vast Three Gorges Dam Before continuing by bullet train to Shanghai. SSAW Boutique Bund ★ ★ ★ ★ Learn more...



DAY

- 15 • SHANGHAI** Yuyuan Gardens, Old Shanghai, Antique Market, the Bund, a Skyscraper visit & the Chinese Acrobats.
SSAW Boutique Bund ★ ★ ★ ★ [Learn more...](#)
- 16 • HUANGSHAN** Bullet Train on to Huangshan with an Exhilarating Cable Car Ride to your Hotel.
Beihai Hotel ★ ★ ★
- 17 • HUANGSHAN** The Famous Sunrise on the Mountain & a free day to explore its many excellent hiking paths.
Beihai Hotel ★ ★ ★
- 18 • HANGZHOU** A second chance to see the sunrise before descent & visit to Hongcun Village & car to Hangzhou.
Jinxi Hotel ★ ★ ★ ★ [Learn more...](#)
- 19 • HANGZHOU** Enjoy a Boat Ride on the West Lake & visit the stunning Residence of Hu Xueyan.
Jinxi Hotel ★ ★ ★ ★ [Learn more...](#)
- 20 • YANGSHUO** Fly to Guilin transferring directly to Yangshuo set right amongst the beautiful scenery of this region.
Yangshuo Mountain Retreat ★ ★ ★ [Learn more...](#)
- 21 • YANGSHUO** Free day to explore the town & beautiful surrounding countryside.
Yangshuo Mountain Retreat ★ ★ ★ [Learn more...](#)



DAY

22	• HONG KONG	Visit the spectacular Reed Flute Cave before departing Guilin for Hong Kong with free time on arrival. Salisbury YMCA ★ ★ ★ ★ Learn more...
23	• HONG KONG	A free day to Explore Hong Kong's many & varied attractions. Salisbury YMCA ★ ★ ★ ★ Learn more...
24	• END	Free time before departing China with a wealth of memories of this unique destination. N/A



YOUR DAY BY DAY ITINERARY

The following pages detail your itinerary day by day. All our trips are tried and tested and, between us, we have visited all destinations and accommodation and travelled on modes of transport. We like to offer our clients the greatest flexibility possible with their trip so if there is anything you would like to change please contact us.

JUST ASK US IF YOU WOULD LIKE TO MAKE ANY CHANGES

"We returned to the UK yesterday, completing our 3 weeks in China. Thanks very much for organising our itinerary. Everything went like a dream. Being met at each destination was a real boost and each of these guides were extremely helpful. Accommodation was all good and transport/ tickets all went smoothly. Would have been difficult to do this trip without your organisational help. Thank you!"

Simon & Helen Randfield



YOUR DETAILED DAY BY DAY ITINERARY

DAY 1

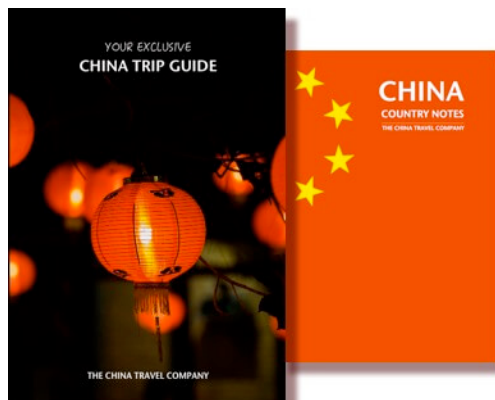
DATE TBC

BEIJING

ARRIVAL IN BEIJING WITH TIME TO RELAX AT THE HOTEL

Welcome to Beijing, China's cultural and political capital and a real highlight with its extraordinary blend of ancient and modern sights. Your guide will greet you at the airport with a transfer by private car to your hotel. The rest of the day is free to relax from the long flight or start to explore the city with the help of your personalised and exclusive Trip Guidebook we send you before the trip. The area around your centrally located hotel is perfect for an introductory walk.

 **Meals Included:** None Today.



YOUR EXCLUSIVE TRIP GUIDEBOOK

Tap in to our knowledge of China with our exclusive guidebook personalised to your trip. These books are packed full of tips about the country, what to take, currency, destination guides and much more. The perfect way to prepare for and get the most out of your China experience with us!

OVERNIGHT

DOUBLE HAPPINESS COURTYARD



A slice of traditional Beijing with a few modern comforts in this charming and well regarded courtyard style hotel - a top Beijing experience!

[CLICK HERE TO LEARN MORE](#)



Photos for guidance only & not necessarily the room booked



THECHINATRAVELCOMPANY.CO.UK | Email: info@thechinatravelcompany.com
UK ☎: +44 (0) 20 8816 8399 | Part of HeadsEast Ltd - UK business registration: 6717612



YOUR DETAILED DAY BY DAY ITINERARY

DAY 2

DATE TBC

BEIJING

TREKKING ALONG A WILD & SPECTACULAR SECTION OF THE GREAT WALL

For the active and energetic, one of the best ways to see the Great Wall is to walk it and with nearly 4,000 miles of actual wall we need to be selective! The most scenic section to trek within reach of Beijing is at Jinshanling. The trek involves about 6km of walking along the wall itself which averages 4 hours. This is the best way to see and absorb yourself in China's best known sight, get some superb photos and avoid the tourist crowds.

Return to your hotel with the rest of the evening free or just ask us for suggestions of shows or cultural activities.

TOP TIP: Bring decent shoes, sunglasses and hat for the trip to the Wall and remember that it is always a good 5 degrees centigrade cooler at the wall than in downtown Beijing.

 **Meals Included:** Hotel Breakfast & Restaurant Lunch.

OVERNIGHT

DOUBLE HAPPINESS COURTYARD



A slice of traditional Beijing with a few modern comforts in this charming and well regarded courtyard style hotel - a top Beijing experience!

[CLICK HERE TO LEARN MORE](#)



Photos for guidance only & not necessarily the room booked



THECHINATRAVELCOMPANY.CO.UK | Email: info@thechinatravelcompany.com
UK ☎: +44 (0) 20 8816 8399 | Part of HeadsEast Ltd - UK business registration: 6717612



"China's top destination
blending ancient &
modern culture."



Averages

Max temp °C

Min temp °C

Rainfall mm

	J	F	M	A	M	J	J	A	S	O	N	D
Max temp °C	2	4	11	20	26	30	31	30	26	19	10	3
Min temp °C	-10	-7	-1	7	13	18	22	20	14	7	-1	-7
Rainfall mm	3	6	9	26	29	71	176	182	49	19	6	2

FORBIDDEN CITY



THE GREAT WALL



PEKING OPERA



YOUR DETAILED DAY BY DAY ITINERARY

DAY 3

DATE TBC

BEIJING

TEMPLE OF HEAVEN, TIANANMEN SQUARE, FORBIDDEN CITY & SUMMER PALACE

Today you will see the main highlights of Beijing starting with the Temple of Heaven, considered by many to be the most beautiful building in China. On to vast Tiananmen Square, home to the Mao Mausoleum (it may be possible to visit if open) and Monument to the People's Heroes before walking to the huge palace complex of the Forbidden City. We'll walk up the middle axis from South to North taking in the splendour of the most important central buildings before finishing in a small and ancient garden by the north gate.

The last stop today is at the Summer Palace to the west of Beijing. Dominated by Kunming lake it is as popular an escape from the city for today's Beijingers as it was for the Imperial court over the centuries.

Return to your hotel with the rest of the evening free or just ask us for suggestions of shows or cultural activities.

 **Meals Included:** Hotel Breakfast & Restaurant Lunch.

OVERNIGHT

DOUBLE HAPPINESS COURTYARD



A slice of traditional Beijing with a few modern comforts in this charming and well regarded courtyard style hotel - a top Beijing experience!

[CLICK HERE TO LEARN MORE](#)



Photos for guidance only & not necessarily the room booked



THECHINATRAVELCOMPANY.CO.UK | Email: info@thechinatravelcompany.com
UK ☎: +44 (0) 20 8816 8399 | Part of HeadsEast Ltd - UK business registration: 6717612



YOUR DETAILED DAY BY DAY ITINERARY

DAY 4

DATE TBC

XIAN

EXPLORE OLD BEIJING BY CYCLE RICKSHAW STOPPING AT PRINCE GONG'S MANSION BEFORE A BULLET TRAIN TO XIAN

Step back in time with a trip by cycle rickshaw through some of Beijing's ancient residential Hutongs - the heart and soul of the city. The Hutongs surround the Forbidden city and the closer you lived to the Emperor the more important you were socially. Today the Hutongs are preserved in the centre of Beijing and provide a fascinating insight into traditional Chinese city life. There is also luxury in the Hutongs and we visit Prince Gong's Mansion, an extravagant residential complex of gardens and pavilions built in 1777.

After the tour a transfer to the station to catch a bullet train. Reaching speeds of over 300 km/hour the overall trip is on a par with flying with the added bonuses of views from the window and being able to stretch your legs.

Late afternoon arrival in Xian, China's Tang Dynasty Capital and terminus of the Silk Road with a transfer to your hotel to overnight.

 **Meals Included:** Hotel Breakfast.

OVERNIGHT

ATOUR NANMEN XIAN



A new addition and one of the few boutique places available in Xian. Good location near the City Walls and good staff make this a fine choice.

[CLICK HERE TO LEARN MORE](#)



Photos for guidance only & not necessarily the room booked



THECHINATRAVELCOMPANY.CO.UK | Email: info@thechinatravelcompany.com
UK ☎: +44 (0) 20 8816 8399 | Part of HeadsEast Ltd - UK business registration: 6717612



"Offers much more than just the Terra Cotta warriors."



Averages

Max temp °C

Min temp °C

Rainfall mm

	J	F	M	A	M	J	J	A	S	O	N	D
Max temp °C	5	8	14	21	26	31	32	31	25	20	12	6
Min temp °C	-4	-1	4	10	14	19	22	21	16	10	3	-3
Rainfall mm	7	10	29	43	60	54	99	71	92	60	24	6

TERRA COTTA ARMY



CITY WALLS



NIGHT MARKET



YOUR DETAILED DAY BY DAY ITINERARY

DAY 5

DATE TBC



TERRA COTTA ARMY, BIG WILD GOOSE PAGODA, CITY WALLS & MUSLIM QUARTER

Today visit one of China's most extraordinary sights, the Terra Cotta Army built by China's first Emperor Qin Shi Huang in 246 BC. Several thousand of the life-sized soldiers are on display and, with no two soldiers looking alike, make for a truly impressive spectacle.

We also visit a relic of the Tang Dynasty, the Big Wild Goose Pagoda, home to some of the most famous Buddhist scriptures in China. It is possible to climb the pagoda - you will need to buy a ticket locally if you wish to do this - for views over Xian. Continue to the 14 km Ming Dynasty City Walls which are up to 18 meters thick at the base and 12 meters in height. It is possible to hire bicycles and ride some sections of the wall - local rental payment required.

Finish the day with a wander through Xian's vibrant Muslim quarter, including a visit to the Great Mosque, unusually built entirely in the Chinese architectural style. This area is an excellent place to souvenir shop.

 **Meals Included:** Hotel Breakfast & Restaurant Lunch.

OVERNIGHT

ATOUR NANMEN XIAN



A new addition and one of the few boutique places available in Xian. Good location near the City Walls and good staff make this a fine choice.

[CLICK HERE TO LEARN MORE](#)



Photos for guidance only & not necessarily the room booked



THECHINATRAVELCOMPANY.CO.UK | Email: info@thechinatravelcompany.com
UK ☎: +44 (0) 20 8816 8399 | Part of HeadsEast Ltd - UK business registration: 6717612



YOUR DETAILED DAY BY DAY ITINERARY

DAY 6

DATE TBC

LHASA

FLIGHT ON TO LHASA AND YOUR FIRST TASTE OF THIS EXTRAORDINARY CITY

Transfer to the airport for your flight to Lhasa (note that most flights are very early in the morning). Your guide will have your Tibet Travel Permit and plane ticket. Arrival at Lhasa's Gonggar airport after what has, cloud cover permitting, been a spectacular flight. Your guide will be meeting you at the airport for the 1 hour drive to Lhasa. Tibet's capital, at a quite manageable altitude of 3,650 meters (12,000 feet) is a unique city and a real highlight of any trip. The setting, history, architecture, people and contrasts all make for a very special travel experience. Free time to relax and adjust to the altitude or start exploring the city.

TOP TIP: Take it easy this first day in Lhasa allowing yourself to slowly acclimatise to the altitude. Keep hydrated and avoid coffee and alcohol.

 **Meals Included:** Hotel Breakfast if time & Snack on the Plane.

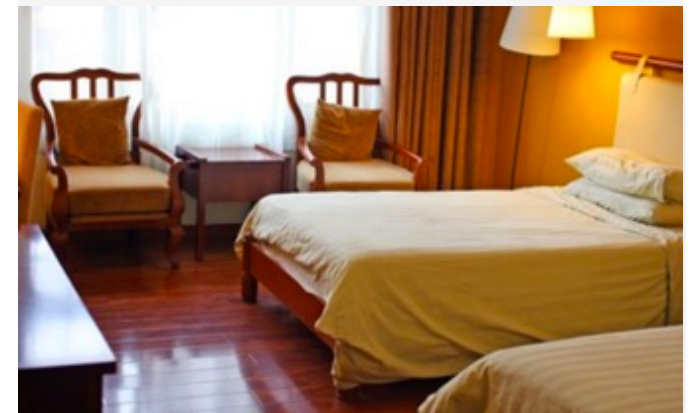
OVERNIGHT

KYICHU HOTEL



Well located in the Old City with much of interest in the area. Hotel is designed in the traditional Tibetan style and has a pleasant garden.

[CLICK HERE TO LEARN MORE](#)



Photos for guidance only & not necessarily the room booked



THECHINATRAVELCOMPANY.CO.UK | Email: info@thechinatravelcompany.com
UK ☎: +44 (0) 20 8816 8399 | Part of HeadsEast Ltd - UK business registration: 6717612



"A destination hard to describe and totally unique."



Averages

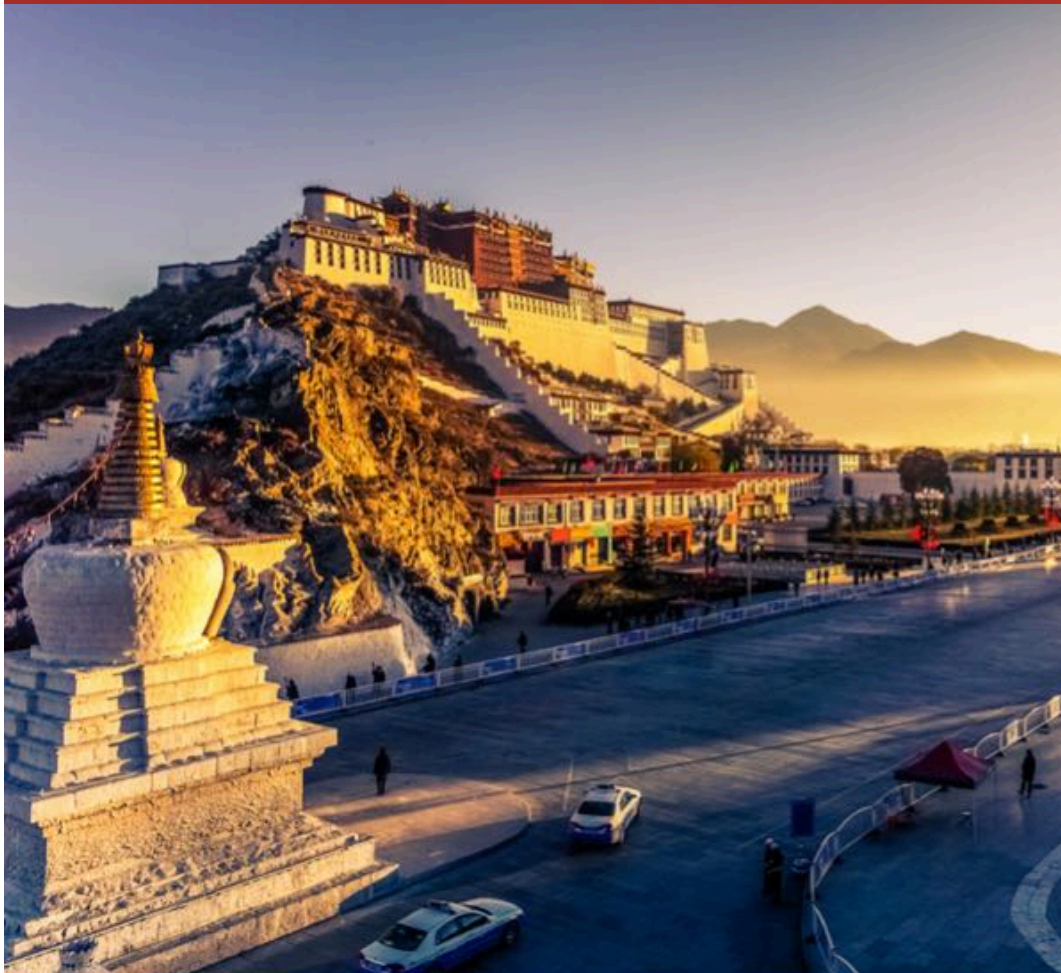
Max temp °C

Min temp °C

Rainfall mm

	J	F	M	A	M	J	J	A	S	O	N	D
Max temp °C	7	9	13	16	20	23	23	21	20	17	12	8
Min temp °C	-9	-6	-2	2	6	10	10	10	8	2	-4	-8
Rainfall mm	1	1	3	6	28	71	117	121	69	9	2	1

POTALA PALACE



FRIENDLY PEOPLE



TEMPLES



YOUR DETAILED DAY BY DAY ITINERARY

DAY 7

DATE TBC

LHASA

DREPUNG MONASTERY, NECHUNG RESIDENCE, SACRED JOKHANG TEMPLE & KORA

Today first head 5 km out of Lhasa to Drepung Monastery, the largest in Tibet located on Gambo Utse mountain. Founded in 1416, it was the principal seat of learning for the Gelugpa school and at its height was thought to contain up to 10,000 monks (now there are 300). About 10 minutes walk from Drepung is Nechung Chok which was the residence of the State Oracle of Tibet. This small monastery was also evocatively known as the "Demon Fortress of the Oracle King."

After lunch (own arrangement) visit the Jokhang Temple constructed in 642 AD and considered the most sacred and important temple in all Tibet. It is located at one end of Barkhor Square, a fascinating meeting point for pilgrims from all over the region making for an intense atmosphere infused with incense and devotion. Surrounding the temple is the Barkhor Kora, a 1 km circular walk for pilgrims and locals as well as a fascinating market selling all the goods a pilgrim might need on their travels.

 **Meals Included:** Hotel Breakfast.

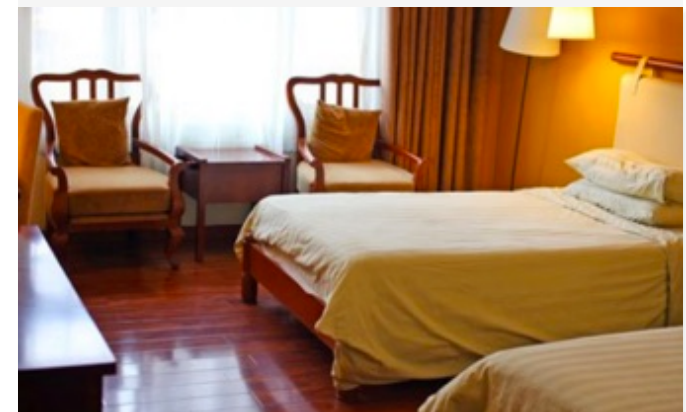
OVERNIGHT

KYICHU HOTEL



Well located in the Old City with much of interest in the area. Hotel is designed in the traditional Tibetan style and has a pleasant garden.

[CLICK HERE TO LEARN MORE](#)



Photos for guidance only & not necessarily the room booked



THECHINATRAVELCOMPANY.CO.UK | Email: info@thechinatravelcompany.com
UK ☎: +44 (0) 20 8816 8399 | Part of HeadsEast Ltd - UK business registration: 6717612



YOUR DETAILED DAY BY DAY ITINERARY

DAY 8

DATE TBC

LHASA

THE TRULY SPECTACULAR POTALA PALACE & ANCIENT SERA MONASTERY

Today you visit one of the architectural highlights of China - if not the world - the vast Potala Palace, former residence of Dalai Lamas. Building started in 1645 and has been added to over the centuries. It is 13 stories high and contains over 1,000 rooms, 10,000 shrines and 200,000 statues. You will see some of the meeting rooms as well as the extraordinary chapels with their vast gold and jewel encrusted shrines to previous Dalai Lamas - the chapel of the 5th Dalai Lama has a stupa coated in 3,727kg of gold and 18,680 precious stones. The Potala dominates Lhasa and the views from the palace stretch out across the city to the surrounding mountains.

Continue to Sera Monastery, spread over 28 acres at the base of Pubuchok mountain and built in 1419. The highlights are the great assembly hall and some of the colleges located within the complex with their wealth of architectural features and shrines.

 **Meals Included:** Hotel Breakfast.

OVERNIGHT

KYICHU HOTEL



Well located in the Old City with much of interest in the area. Hotel is designed in the traditional Tibetan style and has a pleasant garden.

[CLICK HERE TO LEARN MORE](#)



Photos for guidance only & not necessarily the room booked



THECHINATRAVELCOMPANY.CO.UK | Email: info@thechinatravelcompany.com
UK ☎: +44 (0) 20 8816 8399 | Part of HeadsEast Ltd - UK business registration: 6717612



YOUR DETAILED DAY BY DAY ITINERARY

DAY 9

DATE TBC

LHASA

DAY TRIP TO GANDEN MONASTERY WITH TIME TO WALK IN THE HILLS

Today you leave the city into the often dramatic countryside to the huge Ganden Monastery approached by a spectacular winding road. Ganden is one of the 'great three' Gelukpa university monasteries of Tibet, located at the top of Wangbur Mountain 36 km from Lhasa at an altitude of 4,300m. Founded in 1409 it used to be home to up to 6,000 monks. After touring the monastery you will have time to hike in the surrounding hills with their amazing views across the valleys and mountain ranges returning to Lhasa with a free evening.

PLEASE NOTE: An altitude of over 4,000 meters (13,100 feet) is reached on this trip. Whilst the vast majority of people experience little more than shortness of breath there is a very small risk of more severe complications such as acute mountain sickness (AMS). Note that level of fitness and age are no indication as to whether you are more susceptible or not to AMS. [Click here for more information.](#)

 **Meals Included:** Hotel Breakfast & Picnic Lunch.

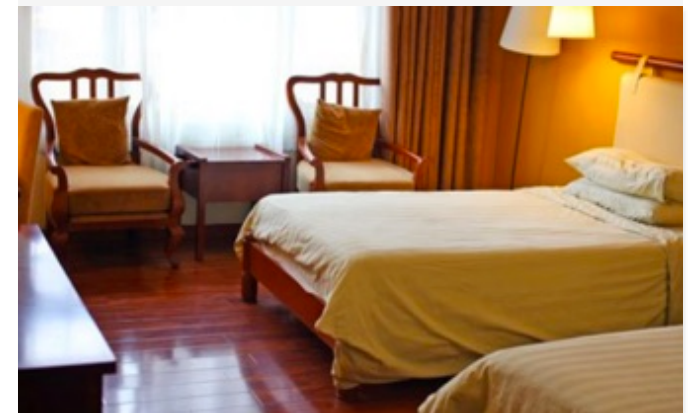
OVERNIGHT

KYICHU HOTEL



Well located in the Old City with much of interest in the area. Hotel is designed in the traditional Tibetan style and has a pleasant garden.

[CLICK HERE TO LEARN MORE](#)



Photos for guidance only & not necessarily the room booked



THECHINATRAVELCOMPANY.CO.UK | Email: info@thechinatravelcompany.com
UK ☎: +44 (0) 20 8816 8399 | Part of HeadsEast Ltd - UK business registration: 6717612



YOUR DETAILED DAY BY DAY ITINERARY

DAY 10

DATE TBC

CHENGDU

FLIGHT OUT OF LHASA TO CHENGDU

Free time until a transfer to the airport for your flight out of Lhasa to Chengdu. We believe, like so many, you will have come under Tibet's magical spell!

Arrival in Chengdu, capital of mountainous and spicy Sichuan province and the place to come and see Giant Pandas. Your guide and driver will meet and transfer you to your hotel. The rest of today is free to start exploring Chengdu with the area around your hotel being full of interest. Alternatively, this characterful hotel's courtyard is an ideal place to relax.

 **Meals Included:** Hotel Breakfast.

OVERNIGHT

BUDDHAZEN HOTEL



A favourite of ours and a top mid-range option with the advantage of being designed in the Chinese traditional style and in an area full of character.

[CLICK HERE TO LEARN MORE](#)



Photos for guidance only & not necessarily the room booked



THECHINATRAVELCOMPANY.CO.UK | Email: info@thechinatravelcompany.com
UK ☎: +44 (0) 20 8816 8399 | Part of HeadsEast Ltd - UK business registration: 6717612



成都 CHENGDU HIGHLIGHTS

"Pandas and much more make Chengdu a popular stop."



Averages

Max temp °C

Min temp °C

Rainfall mm

	J	F	M	A	M	J	J	A	S	O	N	D
Max temp °C	9	11	16	22	26	28	30	30	26	21	16	11
Min temp °C	3	5	8	13	17	21	22	22	19	15	10	5
Rainfall mm	8	12	20	44	79	107	225	201	119	35	16	5

GIANT PANDAS



SIHUAN OPERA



OLD CITY



THECHINATRAVELCOMPANY.CO.UK | Email: info@thechinatravelcompany.com
 UK ☎: +44 (0) 20 8816 8399 | Part of HeadsEast Ltd - UK business registration: 6717612



DAY 11

DATE TBC

YANGTZE

THE WORLD FAMOUS RESEARCH BASE FOR GIANT PANDA BREEDING & BULLET TRAIN TO CHONGQING TO JOIN YOUR YANGTZE CRUISE

This morning we visit Chengdu's famous Research Base for Giant Panda Breeding which has over 60 pandas and is considered the best place in the world to see these endangered icons of China. In addition to the many pandas you can see here (including Red Pandas) there is an opportunity to hold a panda cub although note that this is not guaranteed and requires a local payment direct to the the Research base of RMB 2,000 per person in the photo (not per photo) and must be booked in advance which we can do for you.

Transfer on to the station to catch a bullet train to a vast city on the banks of the Yangtze River and start point for Cruises downriver. Transfer on arrival to your cruise ship which departs early evening with dinner once underway. Note that some cruise ships do not offer dinner the first night in which case we will take you to a local restaurant before boarding.

Settle in to your cabin and start to explore the boat before heading to an observation deck as the ship departs later in the evening to watch the city of Chongqing recede into the distance.

NOTE: Some cruise ships do not offer dinner the first night in which case we will take you to a local restaurant before boarding.

 **Meals Included:** Hotel Breakfast and Restaurant / boat Dinner.

OVERNIGHT

YANGTZE CRUISE SHIP



Cruise boats fall into 4* or 5* categories with little to distinguish boats within their class. All boats have good facilities, food and the same views!

[CLICK HERE TO LEARN MORE](#)



Photos for guidance only & not necessarily the room booked



YOUR DETAILED DAY BY DAY ITINERARY

DAY 12

DATE TBC

YANGTZE

CRUISE THROUGH QUTANG GORGE & TAKE A SIDE TRIP TO SHIBAOZHAI

Your first full day on board navigating the 8 km long Qutang Gorge, the Yangtze's third gorge. The ship also stops for a shore excursion to Shibaozhai, a complex perched on cliffs above the river with commanding views. In the evening the crew put on a show or other entertainment in the ship's lounge.

 **Meals Included:** Breakfast, Lunch & Dinner on the Ship.

OVERNIGHT

YANGTZE CRUISE SHIP



Cruise boats fall into 4* or 5* categories with little to distinguish boats within their class. All boats have good facilities, food and the same views!

[CLICK HERE TO LEARN MORE](#)



Photos for guidance only & not necessarily the room booked



THECHINATRAVELCOMPANY.CO.UK | Email: info@thechinatravelcompany.com
UK ☎: +44 (0) 20 8816 8399 | Part of HeadsEast Ltd - UK business registration: 6717612





长江 YANGTZE RIVER HIGHLIGHTS

"A relaxing 3 plus day cruise and well deserved China highlight."



Averages

Max temp °C

Min temp °C

Rainfall mm

	J	F	M	A	M	J	J	A	S	O	N	D
Max temp °C	11	13	17	23	27	29	33	34	28	22	17	12
Min temp °C	6	8	11	15	19	22	25	25	21	16	12	8
Rainfall mm	20	21	36	105	152	171	175	184	128	92	46	25

CRUISING THE GORGES



TRIBUTARY TRIPS



THREE GORGES DAM



THECHINATRAVELCOMPANY.CO.UK | Email: info@thechinatravelcompany.com
UK ☎: +44 (0) 20 8816 8399 | Part of HeadsEast Ltd - UK business registration: 6717612



YOUR DETAILED DAY BY DAY ITINERARY

DAY 13

DATE TBC

YANGTZE

TRIBUTARY SIDE TRIP & CRUISE THE WU & XILING GORGES TO THE THREE GORGES DAM

Today the ship stops for a side trip up on of the Yangtze tributaries switching passengers to much smaller boats to do so. The ship also cruises through the impressive Wu Gorge as well as the West section of Xiling Gorge both of which offer some of the best scenery along the river. During the evening a complete change of scene as the Giant Three Gorges Dam is approached.

 **Meals Included:** Breakfast, Lunch & Dinner on the Ship.

OVERNIGHT

YANGTZE CRUISE SHIP



Cruise boats fall into 4* or 5* categories with little to distinguish boats within their class. All boats have good facilities, food and the same views!

[CLICK HERE TO LEARN MORE](#)



Photos for guidance only & not necessarily the room booked



THECHINATRAVELCOMPANY.CO.UK | Email: info@thechinatravelcompany.com
UK ☎: +44 (0) 20 8816 8399 | Part of HeadsEast Ltd - UK business registration: 6717612



YOUR DETAILED DAY BY DAY ITINERARY

DAY 14

DATE TBC

SHANGHAI

TOUR TO THE VAST THREE GORGES DAM BEFORE CONTINUING TO SHANGHAI

This morning you need to pack and check out of your room before a final shore excursion to the gigantic and controversial Three Gorges Dam, the world's largest in terms of its ability to generate electricity through its 32 turbines.

After this tour one of 2 things will happen depending on the transport schedule to the next destination. Either you will transfer directly from the Dam to the airport or a coach will take you to the Yichang Cruise Terminal where you meet your transfer guide. If the flight out is later in the afternoon (as often the only option is) then you will have a tour of Yichang city before a transfer on to the airport for your flight to Shanghai.

Arrival in Shanghai, China's exciting and futuristic financial capital and living testament to China's phenomenal growth. Your guide and driver will meet and transfer you to your hotel.

 **Meals Included:** Breakfast on the Ship.

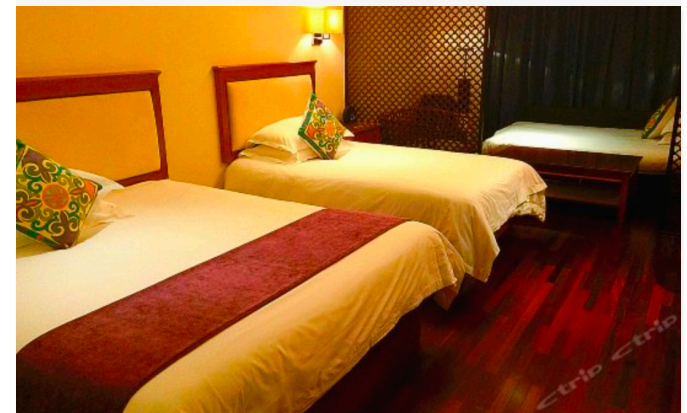
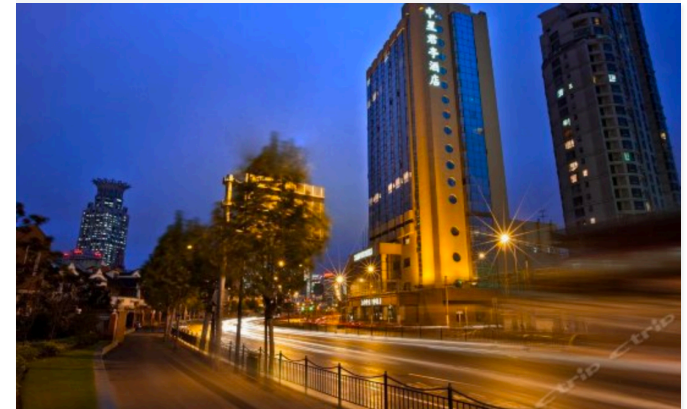
OVERNIGHT

SSAW BOUTIQUE BUND



Located on Renmin Road near enough to all of Shanghai's main attractions. A welcome newer addition to the boutiques of Shanghai.

[CLICK HERE TO LEARN MORE](#)



Photos for guidance only & not necessarily the room booked



THECHINATRAVELCOMPANY.CO.UK | Email: info@thechinatravelcompany.com
UK ☎: +44 (0) 20 8816 8399 | Part of HeadsEast Ltd - UK business registration: 6717612



"Dynamic and modern city
and key to the future of
China."



Averages	J	F	M	A	M	J	J	A	S	O	N	D
Max temp °C	8	8	13	19	24	27	32	32	27	22	17	11
Min temp °C	1	2	5	11	16	20	25	25	21	15	9	2
Rainfall mm	7	9	11	13	15	15	18	16	16	13	8	34

PUDONG SKYLINE



YU GARDENS



TRENDY BACKSTREETS



YOUR DETAILED DAY BY DAY ITINERARY

DAY 15

DATE TBC

SHANGHAI

YUYUAN GARDENS, OLD SHANGHAI, ANTIQUE MARKET, THE BUND, SKYSCRAPER & ACROBATS

Today you will have a full day private tour of some of Shanghai's highlights starting with the classical Yuyuan Garden that dates back to 1577. Surrounding the garden is Old Shanghai, an area that has been a vibrant commercial centre for over a century. Here we visit Fuyou Road antique market, one of the best places for souvenir hunting and a fascinating experience even if not shopping. The tour continues with a walk down the Bund along which the Huangpu River runs and where some of Asia's finest colonial architecture is located. From here we cross the River by ferry to Shanghai's ultra modern Pudong Financial district for a bird's eye view of the city from the top of one of the stunning skyscrapers.

There is no better way to round off this Shanghai experience than with a visit to the world famous Chinese Acrobats for a show filled with colour and excitement.

Return to your hotel or head out to sample Shanghai's vibrant nightlife.

 **Meals Included:** Hotel Breakfast.

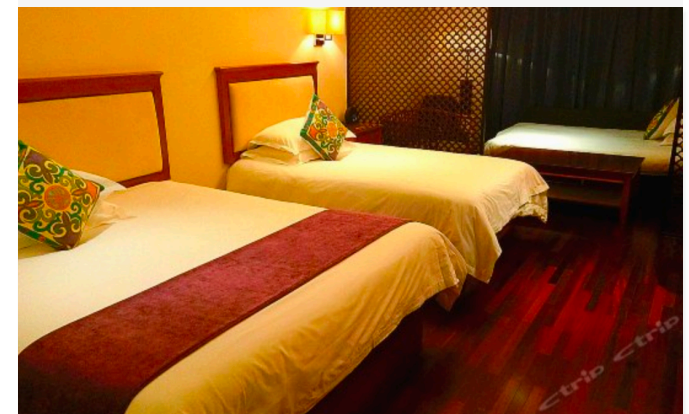
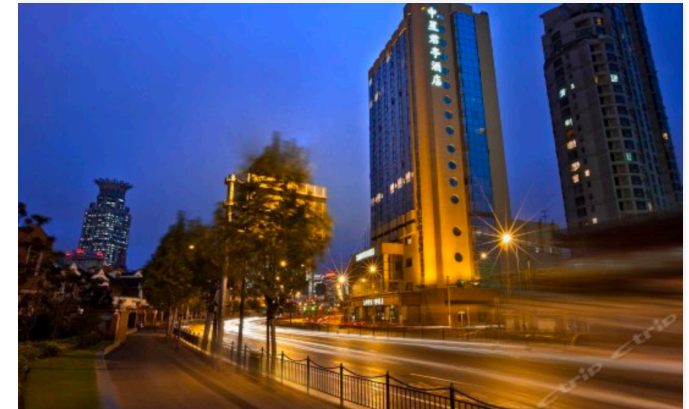
OVERNIGHT

SSAW BOUTIQUE BUND



Located on Renmin Road near enough to all of Shanghai's main attractions. A welcome newer addition to the boutiques of Shanghai.

[CLICK HERE TO LEARN MORE](#)



Photos for guidance only & not necessarily the room booked



THECHINATRAVELCOMPANY.CO.UK | Email: info@thechinatravelcompany.com
UK ☎: +44 (0) 20 8816 8399 | Part of HeadsEast Ltd - UK business registration: 6717612



DAY 16

DATE TBC

HUANGSHAN

BULLET TRAIN TO HUANGSHAN WITH AN EXHILARATING CABLE CAR RIDE TO YOUR HOTEL

After breakfast a transfer to the station for a bullet train out of the big city to the more tranquil environment of Huangshan - China's famed "Yellow Mountain" and a scenic wonder.

Transfer on arrival to Mount Huangshan's cable car station that takes you to the Northern Summit area and your hotel. Note that there is about a 30 minute walk from the top of the cable car to the hotel. You will be able to leave unneeded luggage at a hotel before taking the cable car. It will be late afternoon by the time you have checked-in to your hotel but this is an excellent time to take a short walk in the area around the hotel itself to get a feel for this mountain.

TOP TIP: Sturdy shoes, a hat and sunscreen are recommended and also keep in mind that it can be cool at any time of year up on the mountain but particularly for the sunrise. your hotel should be able to let you borrow a down jacket if required and they often have them in the wardrobe in your room.

 **Meals Included:** Hotel Breakfast.

OVERNIGHT

BEIHAI HOTEL



Not surprisingly there are only a few options at the top and this venerable institution is the best of the lot for convenience and closeness to the sunrise.

[CLICK HERE TO LEARN MORE](#)



Photos for guidance only & not necessarily the room booked



"Our favourite of China's unique and beautiful sacred mountains."



Averages

Max temp °C

Min temp °C

Rainfall mm

	J	F	M	A	M	J	J	A	S	O	N	D
Max temp °C	1	2	6	11	15	18	20	20	17	13	8	4
Min temp °C	-6	-4	-1	5	9	13	16	15	11	7	1	-3
Rainfall mm	79	112	183	233	273	459	335	305	180	112	83	51

DAWN VIEWS



CLOUD SEA



DRAMATIC VIEW POINTS



DAY 17

DATE TBC

HUANGSHAN

THE FAMOUS SUNRISE ON THE MOUNTAIN & A FREE DAY TO EXPLORE ITS MANY PATHS

Make sure you are up very early this morning to see the sunrise Huangshan is famous for. One of the best view points is only a few hundred meters away. Much of the year it can be very cold at dawn but you should find down jackets in your hotel room's wardrobe. If the weather Gods' are on your side the sunrise is spectacular and the "cloud sea" often plays a part in this with a layer of cloud well below your view point. Return to the hotel for breakfast before a free day exploring the multitude of well signed and maintained paths that stretch out across the mountains. There is no set itinerary to follow but the time you have is long enough to see the highlights.

 **Meals Included:** Hotel Breakfast.

OVERNIGHT

BEIHAI HOTEL



Not surprisingly there are only a few options at the top and this venerable institution is the best of the lot for convenience and closeness to the sunrise.

[CLICK HERE TO LEARN MORE](#)



Photos for guidance only & not necessarily the room booked



DAY 18

DATE TBC

HANGZHOU

A SECOND CHANCE TO SEE THE SUNRISE ON HUANGSHAN BEFORE DESCENT, A VISIT TO HONGCUN VILLAGE & CAR TO HANGZHOU

Another chance to see the sunrise (and these can be very different from day to day so resist the temptation to stay in bed!) before breakfast and some more time for further walks.

A transfer guide will meet you at the hotel from where you take the cable car down the mountain and collect any stored luggage. On the way back to Huangshan City stop at the architecturally stunning village of Hongcun. If Hongcun looks familiar to you it may be because scenes from the Chinese film "Crouching Tiger, Hidden Dragon" were filmed here.

Continue by car the 3 hours to Hangzhou, famed throughout China for its culture and the beauty of its West Lake, praised and written about for centuries. Check-in to your hotel with free time for the remainder of the day.

 **Meals Included:** Hotel Breakfast.

OVERNIGHT

JINXI HOTEL



Green surroundings, clean rooms and a lovely ambience make this a good & more relaxed choice in the lush green area to the west of the lake.

[CLICK HERE TO LEARN MORE](#)



Photos for guidance only & not necessarily the room booked

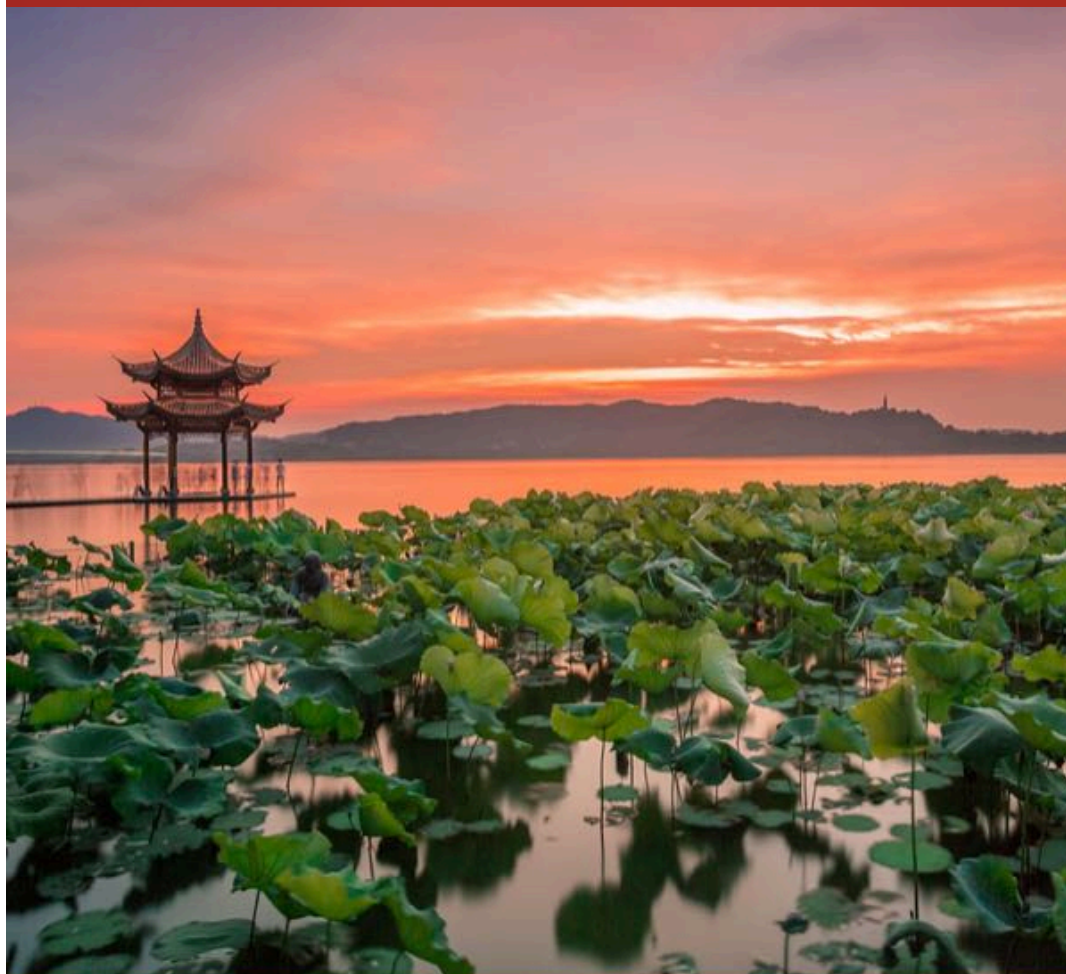


*"Rewarding cultural stop
a short bullet train ride
from Shanghai."*



Averages	J	F	M	A	M	J	J	A	S	O	N	D
Max temp °C	8	10	14	21	26	29	33	32	28	23	17	11
Min temp °C	1	3	6	12	17	21	25	25	20	15	9	4
Rainfall mm	73	84	138	127	147	231	159	156	145	87	60	47

WEST LAKE VIEWS



SERENE TEMPLES



CLASSICAL GARDENS



DAY 19

DATE TBC

HANGZHOU

ENJOY A BOAT RIDE ON THE WEST LAKE & THE STUNNING RESIDENCE OF HU XUEYAN

Hangzhou is famed throughout the country for its beautiful West Lake, one of China's most important cultural centres for the last 1,000 years and represents the Chinese ideal of man in perfect harmony with nature. The many temples and gardens surrounding the West lake are designed to personify this relationship and this style has been exported to Japan and Korea. Today's half day tour includes a boat ride on the lake itself as well as visiting the architecturally important residence of Hu Xueyan.

Return to your hotel with the rest of the evening free or just ask us for suggestions of shows or cultural activities.

 **Meals Included:** Hotel Breakfast & Restaurant Lunch.

OVERNIGHT

JINXI HOTEL



Green surroundings, clean rooms and a lovely ambience make this a good & more relaxed choice in the lush green area to the west of the lake.

[CLICK HERE TO LEARN MORE](#)



Photos for guidance only & not necessarily the room booked



DAY 20

DATE TBC

YANGSHUO

FLIGHT ON TO GUILIN TRANSFERRING DIRECTLY TO YANGSHUO

Early morning flight on to Guilin in Southern China's Guangxi province. Arrival in Guilin with a transfer direct to your hotel in Yangshuo, a relaxed town about 1 hour from Guilin and surrounded by some of China's best scenery.

Free time to start exploring the area, a firm favourite of many for its blend of stunning countryside, relaxed atmosphere and plenty of superb activities to do all of which are easy to arrange locally through your hotel as the whim takes you.

NOTE: Why no Li River Cruise to get to Yangshuo? We feel the Li River Cruise has become over touristed and only recommended if you are not overnighing in Yangshuo itself. The hotel we use in Yangshuo is surrounded by the same beautiful scenery as you see on the Li River and makes for a superb base from which to explore the area. In addition, the Li River Cruise requires a night be spent in Guilin city. Your hotel can take you out on a more private boat to much better scenery and at a minimal cost comparatively.

 **Meals Included:** Hotel Breakfast.

OVERNIGHT

YANGSHUO MOUNTAIN RETREAT



Perfect option for those wanting a quiet, relaxing stay to appreciate the rural beauty of this part of China. A little way from town but that is the point!

[CLICK HERE TO LEARN MORE](#)



Photos for guidance only & not necessarily the room booked



YOUR DETAILED DAY BY DAY ITINERARY

DAY 21

DATE TBC

YANGSHUO

FREE DAY TO EXPLORE THE TOWN & BEAUTIFUL SURROUNDING COUNTRYSIDE

A free day in Yangshuo to continue to explore the town and it's beautiful surrounding countryside. A wide range of local tours and activities can easily be booked locally through the hotel. Such activities include cycle tours, rafting trips, cookery, Tai Chi or calligraphy classes or you can do as so many do here - just relax and take in all the scenery from the terrace of your hotel or the many cafes and restaurants in the town itself.

SUGGESTION (note not included yet): Yangshuo offers the spectacular Liu Sanjie Impression Light Show - a real highlight of any trip to this, or indeed any, part of China. Put together by the same team who organised the 2008 Beijing Olympic opening ceremony, over 600 performers and superb lighting make this outdoor show an unforgettable experience - just ask us for more details!

 **Meals Included:** Hotel Breakfast.

OVERNIGHT

YANGSHUO MOUNTAIN RETREAT



Perfect option for those wanting a quiet, relaxing stay to appreciate the rural beauty of this part of China. A little way from town but that is the point!

[CLICK HERE TO LEARN MORE](#)



Photos for guidance only & not necessarily the room booked



THECHINATRAVELCOMPANY.CO.UK | Email: info@thechinatravelcompany.com
UK ☎: +44 (0) 20 8816 8399 | Part of HeadsEast Ltd - UK business registration: 6717612



"Deservedly popular and home to some of China's most iconic scenery."



Averages

Max temp °C

Min temp °C

Rainfall mm

	J	F	M	A	M	J	J	A	S	O	N	D
Max temp °C	12	13	16	23	27	30	33	33	30	27	20	15
Min temp °C	5	7	10	16	20	23	25	25	22	17	12	7
Rainfall mm	63	97	137	247	352	347	231	173	82	86	64	43

LIMESTONE KARST SCENERY



IMPRESSION LIGHT SHOW



LI RIVER



DAY 22

DATE TBC

HONG KONG

VISIT THE SPECTACULAR REED FLUTE CAVE BEFORE DEPARTING GUILIN

Free time today before a transfer back to Guilin for your onward transport. On the way we stop at Guilin's beautiful Reed Flute Cave, an extensive and colourful subterranean experience over 180 million years old and full of stalactites, stalagmites and 70 inscriptions which can be dated back as far as 792 AD in the Tang Dynasty and has been a tourist attraction for nearly 1,200 years!

Continue to the airport for your flight on to Hong Kong. Arrival in Hong Kong. This former British colony is still very distinct from Mainland China with one of the world's most impressive skylines, superb food, world class shopping and tranquil islands dotted with timeless temples and fishing harbours. Your guide and driver will meet and transfer you to your hotel.

 **Meals Included:** Hotel Breakfast.

OVERNIGHT

SALISBURY YMCA



A long time favourite and for good reason as the location is hard to beat for the class of hotel - next door to the world famous Peninsula in Kowloon.

[CLICK HERE TO LEARN MORE](#)



Photos for guidance only & not necessarily the room booked



DAY 23

DATE TBC

HONG KONG

FREE DAY TO EXPLORE HONG KONG'S MANY & VARIED ATTRACTIONS

A full day in Hong Kong to explore this fabulous city, famous Victoria harbour, the Peak, outlying islands such as Lamma and Lantau, vibrant markets and fantastic entertainment scene.

Shopping and food are world class and if you still have any energy left by the end of the day the nightlife is some of the most varied and vibrant in Asia. In short you will have plenty to keep you occupied!

 **Meals Included:** Hotel Breakfast.

OVERNIGHT

SALISBURY YMCA



A long time favourite and for good reason as the location is hard to beat for the class of hotel - next door to the world famous Peninsula in Kowloon.

[CLICK HERE TO LEARN MORE](#)



Photos for guidance only & not necessarily the room booked



THECHINATRAVELCOMPANY.CO.UK | Email: info@thechinatravelcompany.com
UK ☎: +44 (0) 20 8816 8399 | Part of HeadsEast Ltd - UK business registration: 6717612



"Fantastic and vibrant place to finish a China trip in."



Averages

Max temp °C

Min temp °C

Rainfall mm

	J	F	M	A	M	J	J	A	S	O	N	D
Max temp °C	19	19	21	25	29	30	32	31	30	28	24	21
Min temp °C	14	14	17	20	24	27	27	26	26	23	19	15
Rainfall mm	23	48	67	162	317	376	324	301	300	145	35	27

VICTORIA HARBOUR



NIGHT MARKETS



PEAK TRAM



DAY 24

DATE TBC

 **END**

FREE TIME BEFORE DEPARTING CHINA WITH A WEALTH OF MEMORIES OF THIS UNIQUE DESTINATION

Free time to today to further explore the city (most flights back to Europe depart late at night). If you are looking for something a bit quieter and you didn't make it to one of the outlying islands yesterday this could be an ideal way to spend today. All of them have good hiking options and delicious seafood with frequent ferry services departing from the piers on Hong Kong Island's Central district.

Make your own way from your hotel to the airport for your flight out of the city. The easiest way to get to the airport is by taxi which your hotel can arrange. There is also an efficient airport bus service or you can use the Airport Express trains. See our Trip guidebook or ask your hotel for full details.

We sincerely hope that you have had a fantastic China experience with us full of all the memories which make this country such a fascinating destination that continues to inspire us!

 **Meals Included:** Hotel Breakfast.



Dawn Collins & Family

"I cannot praise the company and the team enough for the help we got planning this trip - right down to the finer details.

I have never received the customer service of this level from another tour operator, and would have no reservations about recommending your company."

[VIEW MORE FEEDBACK](#)



• Price guide* per person based on 2 people travelling: **UK £ 7,340 / US\$ 9,175**

** Prices vary by date, availability and the number of people in your party. Please contact us for a firm quote.*

A full list of what is included in this price can be seen on the following pages. Note that this does not include any international flights or visas.

• Booking and payment terms:

Once we receive completed booking forms we will book and confirm services for you and send an invoice for the deposit payment of 20% per person (plus any international flights we are booking) with full payment due 60 days before departure. All payments to us are protected under our ATOL or ABTA licenses and we accept payment by Credit Card, Debit Card (no fee) or bank transfer. [Click here to read our Booking Terms & Conditions.](#)

• Our pricing policy:

We believe that the the pricing for this tour offers excellent value for the services and standards we operate and we frequently check our pricing against that of other operators. If you feel you have a similar quote that is of a lower price we are happy to reconsider our pricing for you if you can forward the other quote so we can fairly compare. We would add that in our experience we usually find some differences that, although they may appear subtle, make both a significant difference to the price and, more importantly, the quality of the trip experience.



INCLUSIONS & EXCLUSIONS FOR THIS ITINERARY

Here you will find the inclusions and exclusions for this itinerary. We guarantee you will receive the services below although on very rare occasions one service may need to be replaced with another similar one as there are a lot of complex logistical elements to a trip like this.

■ INTERNATIONAL PLANE TICKETS: Tickets for flights the start and finish of the above trip

✈ International flight tickets are NOT included in this itinerary. We CAN arrange these for you.

■ INTERNAL PLANE TICKETS: Tickets for flights within China

- ✈ Xian to Lhasa economy class
- ✈ Lhasa to Chengdu economy class
- ✈ Yichang to Shanghai economy class
- ✈ Hangzhou to Guilin economy class
- ✈ Guilin to Hong Kong economy class

Domestic Luggage Policy:

- **Some flights do not allow baggage to be included in the cost of the ticket and must be paid for locally.**

- Passengers are permitted one check-in hold piece with maximum weight of 99 lb / 45 kg and up to 100 cm (39") in length, 60 cm (24") in width and 40 cm (16") in height.
- Passengers are permitted one carry-on piece with a maximum weight of 11 lb / 5 Kg. Each carry-on must not be more than 55 cm (22") in length, 40 cm (16") in width and 20 cm (8") in height

■ TRAIN TICKETS: Click here to learn more about the trains - ask us about possible upgrades

- ✓ Beijing to Xian first class bullet train (5 hour trip)
- ✓ Chengdu to Chongqing first class bullet train (2 hour trip)
- ✓ Shanghai to Huangshan first class bullet train (5 hour trip)



INCLUSIONS & EXCLUSIONS FOR THIS ITINERARY

■ OTHER TRANSPORT: Between destinations and other than plane or train

- ✓ Yangtze River Cruise Chongqing to Yichang
- ✓ Private Car from Hangzhou to Huangshan (3 hours)

■ ACCOMMODATION: Let us know if you have your own hotel preferences or wish to upgrade

- ✓ 3 nights Beijing - Double Happiness Courtyard Hotel 3* (deluxe suite room with breakfast)
- ✓ 2 nights Xian - Atour Hotel Xian 4* (deluxe room with breakfast)
- ✓ 4 nights Lhasa - Kyichu Gu 3* (deluxe room with breakfast)
- ✓ 1 night Chengdu - BuddhaZen Hotel 3* (superior room with breakfast)
- ✓ 3 nights Yangtze River - 5* Cruise ship deluxe twin room with private bathroom and river view.
- ✓ 2 nights Shanghai - SSAW Boutique Hotel Bund 4* (deluxe room with breakfast)
- ✓ 2 nights Huangshan - Beihai Hotel 3* (standard room with breakfast)
- ✓ 2 nights Hangzhou - Jinxi Hotel 4* (garden view room with breakfast)
- ✓ 2 nights Yangshuo - Yangshuo Mountain Retreat 3* (deluxe room with breakfast)
- ✓ 2 nights Hong Kong - Salisbury YMCA hotel 4* (harbour view room with breakfast)

■ TRANSFERS: Private with driver and an English speaking guide (except where stated)

- ✓ Beijing - Airport to Hotel
- ✓ Beijing - Hotel to Bullet Train Station
- ✓ Xian - Bullet Train Station to Hotel
- ✓ Xian - Hotel to Airport
- ✓ Lhasa - Airport to Hotel
- ✓ Lhasa - Hotel to Airport
- ✓ Chengdu - Airport to Hotel
- ✓ Chengdu - Hotel to Bullet Train Station
- ✓ Chongqing - Bullet Train Station to Yangtze cruise ship



INCLUSIONS & EXCLUSIONS FOR THIS ITINERARY

- ✓ Yichang - Yangtze Cruise Ship / Dam / Tour to Airport
- ✓ Shanghai - Airport to Hotel
- ✓ Shanghai - Hotel to Bullet Train Station
- ✓ Huangshan - Bullet Train Station to Huangshan mountaintop Hotel (including cable car and Huangshan Park entrance fee)
- ✓ Huangshan - Mountaintop Hotel to Hotel in Hangzhou (cable car to be paid locally if required) via Hongcun Village.
- ✓ Hangzhou - Hotel to Airport
- ✓ Guilin - Airport to Hotel in Yangshuo
- ✓ Yangshuo - Hotel to Guilin Airport
- ✓ Hong Kong - Airport to Hotel

■ TOURS: All our tours include entrance fees and use professional, licensed guides

- ✓ Beijing - Full day private tour to the Great Wall at Mutianyu and 2008 Bird's Nest Stadium and Water Cube (exteriors only).
- ✓ Beijing - Full day private tour to Tiananmen Square, The Forbidden City, The Temple of Heaven & Summer Palace.
- ✓ Xian - Full day private tour to the Terra cotta Warriors, Wild Goose Pagoda, City Walls, Muslim Quarter.
- ✓ Lhasa - Full day private tour to Drepung Monastery, Nechung residence, the Jokhang temple and Kora and Barkhor Square.
- ✓ Lhasa - Full day private tour to the Potala Palace and Sera Monastery.
- ✓ Lhasa - Full day private tour to Ganden Monastery including time to hike in the surrounding hills.
- ✓ Chengdu - Half day private tour to the Research Base for Giant Panda Breeding.
- ✓ Yangtze River - Group excursions to Shibaozhai, Shennong Stream and the Three Gorges Dam.
- ✓ Shanghai - Full day private tour to the Yuyuan gardens, Old City, Fuyou Road Antique Market, The Bund, Huangpu River and Skyscraper.
- ✓ Shanghai - Evening trip to the Chinese Acrobats including transfers.
- ✓ Huangshan - Tour to Hongcun.
- ✓ Hangzhou - Full day private tour of the West Lake including Lingyin Temple, Six Harmonies Pagoda and a tea plantation.
- ✓ Guilin - Visit to the Reed Flute Cave on the way back from Yangshuo to Guilin.

■ OTHER INCLUSIONS: Also included in this trip

- ✓ Meals - As indicated in the itinerary.
- ✓ Tibet Travel Permit needed to travel in this province.



INCLUSIONS & EXCLUSIONS FOR THIS ITINERARY

- ✓ Visa Paperwork - Confirmation documentation you need in order to get the visas.
- ✓ Support - Emergency numbers and contacts for each destination.
- ✓ Guidebook - Our exclusive Trip Guidebook personalised to your trip.
- ✓ Financial Peace of Mind - All monies paid to us are legally protected under UK law.

■ NOT INCLUDED IN THIS TOUR

- ✗ International Airfare to / from the start / finish of your trip - we can book these flights on request.
- ✗ The Chinese visa - we can advise and partner with [VisaCentral](#).
- ✗ Travel insurance to cover any medical treatment - we recommend [Citybond Suretravel](#) (UK residents only).
- ✗ Discretionary gratuities to drivers and guides.

■ END





"A fantastic, once in a lifetime trip, arranged by real experts – thank you. We saw and experienced so much in the space of a few weeks and have so many memories to look back on."

Jill Morris



"I cannot praise the company and the team enough for the help we got planning this trip. I have never received the customer service of this level and would have no reservations about recommending your company."

Dawn Collins



"This holiday was one of the best we have had, thanks to everyone who made it possible. I've done the google review, it's important that people can see how good you are. Many Thanks for your help."

Tim Ellis



"The trip exceeded my expectations. It was well organised, we felt really well supported, the guides made us feel very welcome and well looked after and we were very pleased with the hotels."

Fiona Nicolle & Family



"Absolutely awesome time! I think we have seen as many of the iconic sights of China that you could possibly fit into 2 weeks and all done in comfort and style. Thank you so much."

Susan Rutherford



"It was an excellent, well organised trip to many areas of China which we wouldn't have been able to do without your expertise. Thank you for a trip of a lifetime from myself and my family."

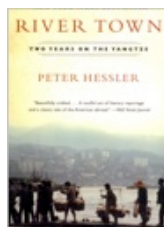
Lily O'Hara & Family

[CLICK HERE TO VIEW MORE FEEDBACK ON OUR WEBSITE](#)



THECHINATRavelCOMPANY.CO.UK | Email: info@thechinatravelcompany.com
UK ☎: +44 (0) 20 8816 8399 | Part of HeadsEast Ltd - UK business registration: 6717612





RIVER TOWN

PETER HESSLER

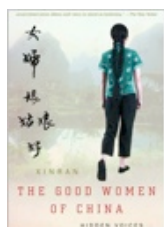
Set in the remote town of Fuling in the Yangtze River Valley this best selling book charts the experiences of the author as a Peace Corps volunteer at a time when China was embarking on the immense changes of reform and opening up.



MAO: THE UNKNOWN STORY

JUNG CHANG

Well researched and based on interviews with those who knew and dealt with him. The book doesn't flinch from exposing the brutality of Mao but is also charts his rise to power and the methods he employed to maintain.



GOOD WOMEN OF CHINA

XINRAN

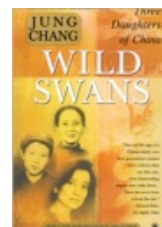
This unforgettable book is the story of how Xinran negotiated the minefield of restrictions imposed on Chinese journalists to reach out to women across the country.



RED CHINA BLUES

JAN WONG

An excellent book that covers the authors experiences in China in the 1970s when she moved there from Canada as a supporter of Mao's Cultural Revolution. The book charts her initial enthusiasm for Mao until her eventual disillusionment.



WILD SWANS

JUNG CHANG

20th Century history told through the the story of three generations of the same family. There are few books on China which bring the history to life and feel so personal with such ease and readability.



CHINA ROAD

ROB GIFFORD

Running 3,000 miles from Shanghai to the border of Kazakhstan in the north-west, Route 312 - China's 'Route 66' - is a road that Rob Gifford has always wanted to travel. Part pilgrimage, part reportage - this book illuminates a country on the move.



RED DUST

MA JIAN

A travel book set over the authors three years of journeying through remote parts of China in the 1980s which was partly an escape from the surveillance and disapproval of his life by the authorities in Beijing.



WOLF TOTEM

JIANG RONG

This is a compelling story set during the cultural revolution about a Beijing intellectual who volunteers to live in a remote and idyllic area of Inner Mongolia. His simple life here is shattered as people swarm into the region upsetting the environment.



ESSENTIAL CHINA INFORMATION, TIPS & FREQUENTLY ASKED QUESTIONS

HOW FAR IN ADVANCE DO I NEED TO BOOK?

We suggest a minimum of 3 months but most people book further ahead than that to take advantage of competitive international flight pricing which tends to be cheaper the further in advance you book. For some of the smaller and popular boutique style hotels in China you will often need to book at least 6 months in advance to ensure availability.

WHAT HAPPENS ONCE I BOOK?

On completing our booking forms we will make all the necessary reservations and confirm availability with you and issue an invoice for the deposit payment (or full payment if it is less than 60 days before your trip start date). About 1 month before your trip starts we send you our Trip Guidebook which covers all the information you need to know about your trip including emergency contact numbers and hotel details.

WHAT ARE YOUR PAYMENT TERMS & CONDITIONS?

On receipt of a booking confirmation from us we require a deposit payment of 20% per person plus any international airfares. 60 days before departure we require the balance to be settled. You can read our full booking terms and conditions by [clicking here](#). We accept credit card payment and debit card as well as bank transfers.

WHAT CLOTHES SHOULD I BRING?

This is dependent on the time of year. In the summer it is hot almost everywhere so light and well ventilated summer clothing is essential as well as protection from the sun - sunglasses and a hat. Autumn and spring can be a bit unpredictable but if the weather is good it will be the same as you would wear on a good summers day in the UK. Winters are cold and layers of warm clothing are the way to go. China is not so formal for dress although respect should be shown in temples.

WHEN IS THE BEST TIME TO VISIT CHINA?

It is generally considered that the April May and September October periods off the best weather and best chance of clear skies. This doesn't stop many people visiting in the summer months or winter though. China is so big that it has something for any time of the year.

DO YOU OFFER GROUP TOURS IN CHINA?

Very rarely will we offer group tours (the exception are the Li River and Yangtze Cruises as these are by their very nature group trips). Group tours (even small group tours) have quite a bad reputation in China for wasting your precious time on what we call "shopopportunities" (unwanted shopping stops) making private tours a far better option.

DO I NEED A VISA?

Almost all nationalities including US, UK, Australian, Canadian and European citizens. [Click here](#) to see more information on the visas.

IS MY MONEY PROTECTED IF I BOOK WITH YOU?

Yes, all trips booked with us have financial protection through our ATOL license (10287) or insurance we have to cover non-flight bookings. We are also members of ABTA (Y1699) and abide by their code of conduct.

HOW MUCH SPENDING MONEY DO I NEED?

With a full touring program, hotels, transport and transfers booked through us you won't need that much spending money. We generally advise a minimum of £20 a day per person to cover drinks, and an evening meal if that isn't included. You can, of course, spend much more with top restaurants having close to international pricing. Then there are souvenirs and shopping to consider!



ESSENTIAL CHINA INFORMATION, TIPS & FREQUENTLY ASKED QUESTIONS

IS CHINA SAFE?

China is one of the safest countries to visit and in many respects safer for tourists than Western European or North American destinations. Crime against foreigners is very rare and providing common sense is used you should not have any problems. Of course, keep an eye on your pockets and bags in crowds.

WHAT CURRENCY SHOULD I BRING?

Euros, US Dollars and UK Pounds are all accepted for exchange in China although avoid Travellers Cheques as these are hard to exchange. Most people will make use of ATMs which are easy to find and increasingly, you can obtain Chinese yuan before your trip in airports or Post Offices and currency exchange booths. More details on Chinese money and costs can be found by clicking [here](#).

CAN YOU BOOK INTERNATIONAL FLIGHTS ?

Yes, as we hold an ATOL license (number 10287) we are permitted by the Civil Aviation Authority in the UK to book flights on behalf of our clients. We are a British Airways preferred operator but also book with other airlines to get the best deals and routes for our clients.

ARE YOUR TRIPS SUITABLE FOR CHILDREN

China can be a rewarding experience for children. We can advise in more detail what we feel would be the most suitable options depending on the ages of your children and your particular circumstances. We also offer family specific trips you can [view here](#). For pricing purposes anyone 12 years and over at the time of the end of their trips with us is considered an adult.

MEDICAL ADVICE & VACCINATIONS

Our trips are designed for anybody with a reasonable standard of fitness. Where we believe there are special requirements this is mentioned in the trip information. We can cater for clients with disabilities and adapt trips accordingly and we can also cater for different dietary requirements if informed at the time of booking. There are no specific vaccinations required to enter China but you are advised to contact your local travel clinic or doctor as there may be requirements in certain cases that are dependent on your own medical history. A good resource to check requirements is [NHS Fit For Travel](#).

DO YOU SELL TRAVEL INSURANCE?

As a booking condition we require all clients taking our trips to have their own insurance against all possible medical costs whilst abroad. We recommend Citybond Suretravel travel insurance which you can get a quote for by [clicking here](#). Note that we get a small commission on each policy taken out.

PLUGS, ELECTRICITY, INTERNET & WIFI

Voltage in Mainland China is 220V, 50 Hz. A variety of electrical outlets can be found in China and can accept the standard Type A and common Type I plugs as well as Type C plugs. Most hotels will have WiFi in public areas and paid internet in rooms.

IS THERE ANYTHING ELSE I SHOULD BE ASKING?

Almost certainly! We fully expect you will have many more questions and we are here to answer them so please do not hesitate to [contact us](#) as, after all, that is what we are here for!

